



*traditional Italian finishes*

# PRODUCT GUIDE

DECORATION  
RESTORATION  
ARCHITECTURAL COATINGS



An aerial photograph of a large, historic villa complex with multiple buildings featuring arched windows and terracotta roofs. A large, irregularly shaped swimming pool is visible in the lower left, surrounded by a sandy area and lounge chairs. The villa is set on a hillside with lush green lawns and manicured hedges. In the background, a dense forest of tall pine trees covers the hill, and the blue sea is visible at the top of the frame with a few sailboats in the distance.

## THE GREEN SPIRIT

### CO<sub>2</sub>

Seasoned slaked lime, a third of the ingredients in the product's recipe, is still today obtained in a furnace following the traditional method. Because of the chemical composition of this air-hardening lime, once the product is applied, it begins to reabsorb a good portion of the CO<sub>2</sub> emitted during the production process, referred to as the so-called carbonation phase. This process transforms it into calcium carbonate (stone). Traditional slaked lime holds a special record in this balance of emissions and carbonations: as much as 60-62% of the CO<sub>2</sub> is re-absorbed, drastically reducing the permanent emissions in the atmosphere.

Hydrated dolomitic lime and calcic air-hardening lime perform at 53-56%, while hydraulic lime performs at 26% and the other various types of cement do not exceed 1%. Choosing a seasoned slaked lime-based finish for your project is an excellent sustainable, ecological choice.

### Breathability

By nature, unlike acrylic-based finishes, slaked lime-based coatings do not create a barrier to water vapour transmission but instead they promote this exchange.

Dry walls help guarantee a healthy, welcoming environment that preserve their characteristics over time.

### Biocides

The high pH (12.5/13.5) of the finished product itself constitutes a basic environment with antiseptic properties, contributing to purifying living spaces and improving their liveability. rialto antiqua simply does not contain added biocides.

GENERAL INDEX

CONTACT US	5
PRODUCTS INDEX BY CATEGORY	6
ALPHABETIC INDEX	7
TINTOMETRIC SYSTEM rialto REVOLUTION	9



**Sales dept.**

 Main number: **+39 040 9897300**

Ext.	
1	Domestic sales
2	Trieste shop and showroom
3	Domestic agents support
4	Domestic sales direction
5	Export sales dept.
6	Administration office

[rialto@rialto-colors.com](mailto:rialto@rialto-colors.com)
**Technical dept.**

 Main number: **+39 011 9941888**

Ext.	
1	Color lab
2	Technical assistance decorative finishes
3	Domestic technical assistance cement products
4	Tintometric systems assistance
9	Front office



## PRODUCTS INDEX BY CATEGORY

CATEGORY	CODE	PRODUCTS	PAGE
RIALTO REVOLUTION TINTING PASTES	A651	TINTOMETRIC SYSTEM rialto REVOLUTION	9
SEASONED SLAKED LIME FINISHES	A681	antiqua 1	11
	A680	antiqua 2	11
	A685	epoca marmo	12
	A585	epoca ottocento	12
	A360	epoca spatolato	13
	A687	mediterraneo	13
	A682	sinopia	14
	A450	fix 210	14
SILICATE BASED FINISHES	A190	silix	16
SILOXANE AND PHOTOCATALYTIC FINISHES	A961	tonasil a pennello	18
	A590	velasil	18
FINE ORGANIC BASED FINISHES	A102	finish	20
	A103	Q-Tech <span>coming soon</span>	21
	A101	zip	22
DECORATIVE STUCCOS AND FINISHES	A310	evolution	24
	A415	solution	25
	A400	stucco oro/argento/bronzo/ottone	26
	A300	veneziano	27
	A340	veneziano sottofondo	28
	A570	veneziano fondo p.b.	28
BASECOATS	A265	baxil	30
	A433	durasil	30
	A730	eco fondo	30
	A735	primer one	31
	A720	fondo di aderenza 1	31
	A720	fondo di aderenza 2	31
	A435	isocal	32
	A280	primer	32
LEVELING PLASTERS	A665	wallcem bianco	34
	A660	wallcem grigio	34
PROTECTIVE WAXES AND COATIGNS	A560	cera d'arte	36
	A450	fix 210	36
	A560	wax 15	37

## PRODUCTS INDEX BY CATEGORY

CATEGORY	CODE	PRODUCTS	PAGE
LEVELING PLASTERS	A440	alkal 1	40
	A470	alkal 2	40
	A431	eco silan	41
	A491	graffiti bio-remover	41
	A492	graffiti prevention	42
	A110	idrosverniciatore H315	43
	A480	neutral k1	43
	A480	neutral k2	44
	A390	sx 110-22	44
	A530	sx 5911	44
TOOLS	A200	Professional quality plastering tools	46
MARKETING TOOLS		WeAreColor, marketing tools	47

## ALPHABETIC INDEX

PRODUCT	PAGE
alkal 1	40
alkal 2	40
antiqua 1	11
antiqua 2	11
baxil	30
cera d'arte	36
durasil	30
eco fondo	30
eco silan	41
epoca marmo	12
epoca ottocento	12
epoca spatolato	13
evolution	24
finish	20
fix 210	14
fondo di aderenza 1	31

PRODUCT	PAGE
fondo di aderenza 2	31
graffiti bio-remover	41
graffiti prevention	42
Q-Tech	coming soon
idrosverniciatore H315	43
isocal	32
mediterraneo	13
neutral k1	43
neutral k2	44
primer	32
primer one	31
Professional quality plastering tools	46
silix	16
sinopia	14
solution	25

PRODUCT	PAGE
stucco oro/argento/bronzo/ ottone	26
sx 110-22	44
sx 5911	44
TINTOMETRIC SYSTEM rialto REVOLUTION	9
tonasil a pennello	18
velasil	18
veneziano	27
veneziano fondo p.b.	28
veneziano sottofondo	28
wallcem bianco	34
wallcem grigio	34
wax 15	37
WeAreColor, marketing tools	47
zip	22



# Tintometric system - pricelist **rialto REVOLUTION**



## A651 - WATER-BASED PROFESSIONAL TINTING PASTES

### Pastes base system

Prices are VAT excluded

Color	Code	Type	Weather resistance	€uro/L	Packaging (L)	€uro/unit
<b>PASTA BIANCA 601</b>	A6510060102	Inorganic	High		1,5	
	A6510060105	Inorganic	High		4,71	
<b>PASTA GIALLO OSSIDO 602</b>	A6510060202	Inorganic	High		1,5	
	A6510060205	Inorganic	High		4,65	
<b>PASTA ROSSO OSSIDO 607</b>	A6510060702	Inorganic	High		1,5	
	A6510060705	Inorganic	High		4,45	
<b>PASTA NERO OSSIDO 604</b>	A6510060402	Inorganic	High		1,5	
	A6510060403	Inorganic	High		4,73	
<b>PASTA BLU FTALO 613</b>	A6510061302	Organic	Medium		1,5	
<b>PASTA VERDE FTALO 603</b>	A6510060302	Organic	Medium		1,5	
<b>PASTA MAGENTA 619</b>	A6510061902	Organic	Interiors only		1,5	
<b>PASTA VIOLETTO 625</b>	A6510062502	Organic	Interiors only		1,5	
<b>PASTA GIALLO LIMONE INT. 606</b>	A6510060602	Organic	Interiors only		1,5	
<b>PASTA ARANCIO INT. 614</b>	A6510061402	Organic	Interiors only		1,5	
<b>PASTA ROSSO VIVO INT. 611</b>	A6510061102	Organic	Interiors only		1,5	
<b>PASTA GIALLO SOLE INT. 610</b>	A6510061002	Organic	Interiors only		1,5	
<b>PASTA NERO INTERNI 605</b>	A6510060502	Inorganic	Interiors only		1,5	
<b>PASTA GIALLO SOLIDO 626</b>	A6510062602	Inorganic	High		1,5	
<b>PASTA ARANCIO MINERALE 641</b>	A6510064102	Inorganic	High		1,5	

### Pastes extra system

Prices are VAT excluded

Color	Code	Type	Weather resistance	€uro/L	Packaging (L)	€uro/unit
<b>* PASTA SCARLATTO 644</b>	A6510064402	Organic	High		1,5	
<b>* PASTA GIALLO MINERALE 640</b>	A6510064002	Inorganic	High		1,5	
<b>* PASTA VERDE MINERALE 642</b>	A6510064202	Inorganic	High		1,5	
<b>* PASTA BLU MINERALE 648</b>	A6510064802	Inorganic	High		1,5	

#### NOTE

Rialto revolution tinting system allows you to tint most of the products present in this pricelist in ANY COLOR of ANY COLOR CHART at the same PRICE, on condition that they are formulated with the pastes base system.

Such price of tinted material is shown in this pricelist for each tintable product for any available packaging.

Price of colors that are tinted with pastes of the "Pastes extra system" (for example: vivid colors for exteriors, lime based products or products tintable and available in a white base only "bianco") varies for each color. Such price is available through the formulative of the tinting system RIALTO REVOLUTION.

#### COVERAGE AND AVERAGE COST/sqm:

Coverage and average cost/sqm are evaluated on the number of coats suggested in the TDS's and on real job experience.

Average cost/smq is evaluated considering the the average covering capacity and the price/kg of the larger available packaging.

Contractor/applicator is responsible for the necessary assessments as to whether the product is compatible with the desired use, the specific covering capacity of every job and the related costs.

Rialto cannot be held responsible for discrepancies between the suggested average covering capacities mentioned in this pricelist and the real consumption at the jobsite. They have to be considered as a mere indication and they cannot be considered as contractual obligations.



## SEASONED SLAKED LIME FINISHES

---



s.s. trowel



sponge trowel

Coverage	1,2 - 1,7 Kg/m <sup>2</sup> one/ two coats
Dilution (w/w)	Ready to use
Touch dry	2 hours
Re-coat	24 hours min.

cod **A681 | antiqua 1**  
Seasoned slaked lime based finishing coating  
for interiors and exteriors



	Price in €	25 Kg	10 Kg			Average cost €/m <sup>2</sup>
BIANCO (WHITE)	Price per Kg					
	Price per pack					

**Description:** fine decorative finishing plaster for interiors and exteriors based on long-seasoned magnesian slaked lime (24 months) - colored earths and inorganic pigments - selected authentic white Carrara marble grains.

**Properties:** high water vapor permeability, class V1 ( $\geq 150$  g/m<sup>2</sup> - 24h according to ISO EN 7783-2:2001) - good workability - strong adhesion to the substrate (pull off test according to ISO 4624:2002  $> 0,3$  MPa) - marine air resistant (salt spray test - 550 hours according to ASTM-B 117) - highly abrasion resistant thanks to the magnesium content of the lime - reaction to fire: Euro class A2.

**Appearance:** colored traditional fine lime plaster.

**Note:** the price of each color for this product depends on pigments quantity. Such price is available through the formulative software of the tinting system RIALTO REVOLUTION.



s.s. trowel



sponge trowel

Coverage	2 Kg/m <sup>2</sup> one coat
Dilution (w/w)	Ready to use
Touch dry	2 hours
Re-coat	24 hours min.

cod **A680 | antiqua 2**  
Seasoned slaked lime based finishing coating for  
interiors and exteriors



	Price in €	25 Kg	10 Kg			Average cost €/m <sup>2</sup>
BIANCO (WHITE)	Price per Kg					
	Price per pack					

**Description:** decorative finishing plaster for interiors and exteriors based on long-seasoned magnesian slaked lime (24 months) - colored earths and inorganic pigments - selected authentic white Carrara marble grains.

**Properties:** high water vapor permeability, class V1 ( $\geq 150$  g/m<sup>2</sup> - 24h according to ISO EN 7783-2:2001) - good workability - strong adhesion to the substrate (pull off test according to ISO 4624:2002  $> 0,3$  MPa) - marine air resistant (salt spray test - 550 hours according to ASTM-B 117) - highly abrasion resistant thanks to the magnesium content of the lime - reaction to fire: Euro class A2.

**Appearance:** colored traditional lime plaster with a rustic look.

**Note:** the price of each color for this product depends on pigments quantity. Such price is available through the formulative software of the tinting system RIALTO REVOLUTION.



antiqua 1 lamato



antiqua 1 frattazzato



antiqua 2 frattazzato



s.s. trowel

Coverage	1,5 Kg/m <sup>2</sup> two coats
Dilution (w/w)	ready to use
Touch dry	2 hours
Re-coat	24 hours min.

### cod **A685** | **epoca marmo** Seasoned slaked lime based finishing coating for interiors and exteriors



INTERIORS



EXTERIORS



COLORS FOR PROFESSIONALS

	Price in €	25 Kg	10 Kg			Average cost €/m <sup>2</sup>
BIANCO (WHITE)	Price per Kg					
	Price per pack					

**Description:** decorative finishing plaster for interiors and exteriors based on long-seasoned magnesian slaked lime (24 months) - colored earths and inorganic pigments - selected authentic white Carrara marble grains - natural ingredients that allow to reproduce the look of marble and stone surface, smooth and solid with a vintage look also suitable to recreate a contemporary concrete look.

**Properties:** high water vapor permeability, class V1 ( $\geq 150$  g/m<sup>2</sup> - 24h according to ISO EN 7783-2:2001) - good workability - strong adhesion to the substrate (pull off test according to ISO 4624:2002  $> 0,3$  MPa) - marine air resistant (salt spray test - 400 hours according to ASTM-B 117) - highly abrasion resistant thanks to the magnesium content of the lime - reaction to fire: Euro class A2.

**Appearance:** traditional marmorino look.

**Note:** the price of each color for this product depends on pigments quantity. Such price is available through the formulative software of the tinting system RIALTO REVOLUTION.



brush

Coverage	3 - 3,5 m <sup>2</sup> /l two coats
Dilution (v/v)	max 25% (water)
Touch dry	2 hours
Re-coat	24 hours min.

### cod **A585** | **epoca ottocento** Seasoned slaked lime based finishing paint for interiors and exteriors



INTERIORS



EXTERIORS



COLORS FOR PROFESSIONALS

	Price in €	14 L	5 L			Average cost €/m <sup>2</sup>
BIANCO (WHITE)	Price per liter					
	Price per pack					

**Description:** finishing mineral paint for interiors and exteriors based on long-seasoned magnesian slaked lime (24 months) - colored earths and inorganic pigments - selected authentic white Carrara marble grains.

**Properties:** high water vapor permeability, class V1 ( $\geq 150$  g/m<sup>2</sup> - 24h according to ISO EN 7783-2:2001) - good workability - strong adhesion to the substrate - marine air resistant - highly abrasion resistant thanks to the magnesium content of the lime.

**Appearance:** "water-color" effect, similar to the ancient lime based paintings.

**Note:** the price of each color for this product depends on pigments quantity. Such price is available through the formulative software of the tinting system RIALTO REVOLUTION.



s.s. trowel



s.s. spatula

Coverage	0,8 - 1,2 kg/m <sup>2</sup> three coats
Dilution (w/w)	Ready to use
Touch dry	2 hours
Re-coat	24 hours min.

cod **A360** | **epoca spatolato**  
Seasoned slaked lime based finishing stucco  
for interiors and exteriors



	Price in €		10 Kg		Average cost €/m <sup>2</sup>
BIANCO (WHITE)	Price per Kg				
	Price per pack				

**Description:** traditional Venetian stucco for interiors and exteriors based on long-seasoned magnesian slaked lime (24 months) - colored earths and inorganic pigments - mineral additives.

**Properties:** high water vapor permeability - Strong adhesion to the substrate - withstands alkali corrosion - highly abrasion resistant thanks to the magnesium content of the lime - good workability - reversible finish.

**Appearance:** glossy spatula effect.

**Note:** the price of each color for this product depends on pigments quantity. Such price is available through the formulative software of the tinting system RIALTO REVOLUTION.



s.s. trowel



lin.effect plastic

Coverage	1,5 - 2,5 Kg/m <sup>2</sup> one coat
Dilution (w/w)	Ready to use
Touch dry	2 hours
Re-coat	24 hours min.

cod **A687** | **mediterraneo**  
Seasoned slaked lime based finishing coating for  
interiors and exteriors



	Price in €		10 Kg		Average cost €/m <sup>2</sup>
BIANCO (WHITE)	Price per Kg				
	Price per pack				

**Description:** thick decorative finishing plaster for interiors and exteriors based on long-seasoned magnesian slaked lime (24 months) - colored earths and inorganic pigments - selected authentic white Carrara marble grains. Rich in fibers for a better workability in a single coat application.

**Properties:** high water vapor permeability, class V1 ( $\geq 150$  g/m<sup>2</sup> - 24h according to ISO EN 7783-2:2001) - good workability - strong adhesion to the substrate (pull off test according to ISO 4624:2002  $> 0,3$  MPa) - highly abrasion resistant thanks to the magnesium content of the lime - reaction to fire: Euro class A2.

**Appearance:** thick lime coating that applied with specific tools and techniques can replicate the texture and look of many famous decorative stones.

**Note:** the price of each color for this product depends on pigments quantity. Such price is available through the formulative software of the tinting system RIALTO REVOLUTION.





s.s. trowel



sponge trowel



spray bottle

Coverage	1,4 - 1,6 Kg/m <sup>2</sup> two coats
Dilution (w/w)	Ready to use
Touch dry	2 hours
Re-coat	24 hours min.

cod **A682** | **sinopia**  
Seasoned slaked lime based interior finishing coating



	Price in €	25 Kg	10 Kg		Average cost €/m <sup>2</sup>
	Price per Kg				
	Price per pack				

**Description:** fine decorative plaster for interiors based on based on long-seasoned magnesian slaked lime (24 months) - colored earths and inorganic pigments - selected authentic white Carrara marble grains.

**Properties:** high water vapor permeability, class V1 ( $\geq 150 \text{ g/m}^2$  - 24h according to ISO EN 7783-2:2001) - good workability - strong adhesion to the substrate (pull off test according to ISO 4624:2002  $> 0,3 \text{ MPa}$ ) - highly abrasion resistant thanks to the magnesium content of the lime - reaction to fire: Euro class A2.

**Appearance:** smooth and suede-like.

**Note:** the price of each color for this product depends on pigments quantity. Such price is available through the formulative software of the tinting system RIALTO REVOLUTION. The final suede like effect is obtained by using the FIX 210 treatment.



spray bottle



sponge

Coverage	100 m <sup>2</sup> /l
Dilution (v/v)	1:15 (water)
Touch dry	60 min
Re-coat	NA

cod **A450** | **fix 210**  
Permeating water repellent for sinopia



	Price in €				0,5 L	Average cost €/m <sup>2</sup>
	Price per liter					
	Price per pack					

**Description:** specific colorless finishing solution, it confers water repellency and the typical suede like effect to the interior slaked lime based decorative plaster sinopia.

**Properties:** neutralized solution based on amino-functional polydimethylsiloxane to be diluted 1:15 with water - it protects from dirt - makes the surface water repellent - confers a peculiar aesthetic effect.

**Appearance:** colorless, suede like to the touch.



## SILICATE BASED FINISHES

---





cod **A190 | silix**  
Mineral paint based on silicates for exteriors



brush

Coverage	5 m <sup>2</sup> /l two coats
Dilution (v/v)	10 - 5% (water)
Touch dry	2 hours
Re-coat	min 12 hours

	Price in €		14 L	4 L		Average cost €/m <sup>2</sup>
BIANCO (WHITE)	Price per liter					
	Price per pack					
BASE 350 Filling %: 92%	Price per liter					
	Price per pack					
BASE 450 Filling %: 88%	Price per liter					
	Price per pack					
COLORED see note at page 9	Price per liter					
	Price per pack					

**Description:** silicate mineral paint based on stabilized and hydrophobized potassium silicate, selected graded aggregates like silica, quartz, selected pigments and special additives.

**Properties:** high water vapor permeability, class V1 ( $\geq 150$  g/m<sup>2</sup> - 24h according to norm ISO EN 7783-2) - water thinnable and resistant to mould attacks - good abrasion resistance and good resistance to acid rains.

**Appearance:** smooth, matt, velvety.



A photograph of a red building facade with classical architectural details and windows. The image shows a section of a building with a vibrant red, textured wall. Two windows with dark frames and white lintels are visible, featuring decorative corbels. A horizontal white line is positioned below the text. The bottom of the image shows a different material, possibly stone or concrete, with a rougher texture.

## SILOXANE AND PHOTOCATALYTIC FINISHES

---



brush

Coverage	0,4 – 0,5 kg/m <sup>2</sup> one coat
Dilution (w/w)	10% (water)
Touch dry	2 hours
Re-coat	4-6 hours

cod **A961 | tonasil a pennello**  
Brushable single coat siloxane coating  
for interiors and exteriors



INTERIORS



EXTERIORS



	Price in €	20 Kg	8 Kg	1 Kg	Average cost €/m <sup>2</sup>
BIANCO (WHITE)	Price per Kg				
	Price per pack				
	Min. order q.ty			6,00	
BASE 350 Filling %: 96%	Price per Kg				
	Price per pack				
	Min. order q.ty			5,10	
COLORED see note at page 9	Price per Kg				
	Price per pack				
	Min. order q.ty			6,00	

**Description:** brushable single coat water-based siloxane coating for interiors and exteriors. Its peculiar formulation with different coarse and fine grain sizes determines a random and pleasant creation of sandy and flat areas rich of smooth shadowy hints that help to hide possible imperfections of the substrate. Medium size grain (0,5 mm).

**Properties:** its mineral-organic formulation makes it suitable for restoration of historical centers under conversation acts where can be present both mineral and organic coatings. Water vapor permeability of class V2, medium (according to norm UNI EN ISO 7783-2), Water absorption (water repellency) of class W3, low (according to norm UNI EN 1062-3).

**Appearance:** very matt finish (< 5 Gloss) and slightly rustic rich of smooth and sandy shadowy hints.



brush



sponge



synthetic sponge



cloth

Coverage	15 m <sup>2</sup> /l two coats
Dilution (v/v)	35/50% (water)
Touch dry	1 hour
Re-coat	min. 12 hours

cod **A590 | velasil**  
High permeable siloxane veiled-effect  
for interiors and exteriors



INTERIORS



EXTERIORS



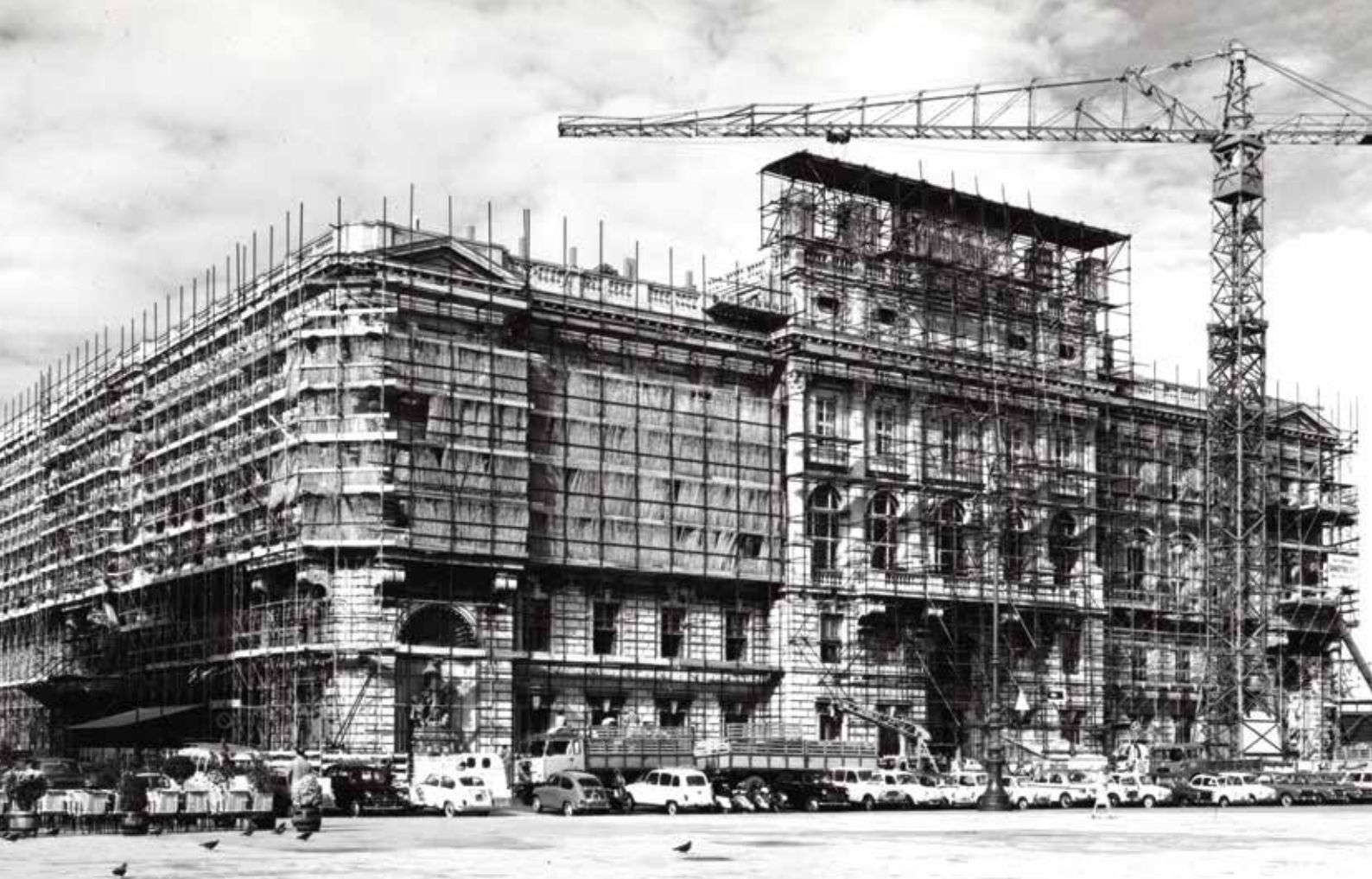
	Price in €	4 L	1 L	Average cost €/m <sup>2</sup>
BIANCO (WHITE)	Price per liter			
	Price per pack			
	Min. order q.ty		6,00	

**Description:** siloxane veiled effect with high water vapor permeability for interiors and exteriors. It based on oligomeric siloxanes, permanent anti-mould agents, selected aggregates and the correct granulometric proportion and UV resistant pigments.

**Properties:** high water vapor permeability - water repellent and weather-resistant - washable and abrasion resistant - formulated to resist mildew growth on the paint film - good resistance to UV rays.

**Appearance:** smooth, matt, cloudy, veiled effect.

**Note:** the price of each color for this product depends on pigments quantity. Such price is available through the formulative software of the tinting system RIALTO REVOLUTION.



FINE ORGANIC BASED FINISHES





brush



roller



spray

Coverage	4 - 5 m <sup>2</sup> /l two coats
Dilution (v/v)	10 - 0% (water)
Touch dry	2 hours
Re-coat	min 12 hours

## cod A102 | finish

Resin based quartz finishing coating for exteriors



	Price in €	14 L	4 L	0,75 L	Average cost €/m <sup>2</sup>
BIANCO (WHITE)	Price per liter				
	Price per pack				
	Min. order q.ty			4,50	
BASE 350 Filling %: 92%	Price per liter				
	Price per pack				
	Min. order q.ty			4,14	
BASE 450 Filling %: 88%	Price per liter				
	Price per pack				
	Min. order q.ty			3,96	
COLORED see note at page 9	Price per liter				
	Price per pack				
	Min. order q.ty	70		4,50	

**Description:** decorative coating for exteriors with high water vapor permeability. Formulated with low environmental impact paint film preservatives and silver ions to enhance its resistance to bacterial aggression.

It is based on a terpolymer resin binder and hard aggregates such as mica, silica, quartz and granite in the correct granulometric proportion, selected pigments and special additives that guarantee a perfect adhesion.

**Properties:** high degree of permanent elasticity - high water vapor permeability: Class V1 (220 g/m<sup>2</sup> - 24h according to norm UNI EN ISO 7783-2) - vapor diffusion/equivalent air thickness Sd: 0.09m (according to norm UNI EN ISO 4624) - high abrasion resistance (> 30.000 cycles according to norm UNI 10560) - highly washable - formulated to prevent mildew growth on the paint film - good film ability at low temperature (according to norm UNI 10793) - strong adhesion to substrate: 37 kgf/cm<sup>2</sup> (pull-of test according to norm UNI EN ISO 4624) - weather-resistant.

**Appearance:** smooth, matt, silky finish (Gloss level 2,6 ± 0,2% @ 20°).





cod **A103 | Q-Tech**  
**Quartz based paint with high hiding power**  
**resistant to mould attack for exteriors**



Coverage	5 m <sup>2</sup> /l two coats
Dilution (v/v) (water)	brush first coat 15-20% second coat 10-15% roller first coat 10-15% second coat max 15%
Touch dry	2-4 hours
Re-coat	min. 4 hours

	Price in €					Average cost €/m <sup>2</sup>
BIANCO (WHITE)	Price per liter					
	Price per pack					
BASE 350	Price per liter					
	Price per pack					
BASE 450	Price per liter					
	Price per pack					
COLORED see note at page 9	Price per liter					
	Price per pack					
	Min. order q.ty					

**Description:** decorative wall paint with high hiding power for exteriors; mainly composed of a blend of alkali resistant co-polymer binders, hard aggregates such as quartz and silica, functional micro nodular mineral extenders that promote a good hiding power right from the first coat, selected pigments and special additives that enhance resistance to mould and algae attack in exteriors.

**Properties:** paint suitable to prevent the development of mould (according to norm UNI 9805) - good thermal endurance of the paint film (according to norm UNI 9429 - zero defects after 15 cycles) - washable and abrasion resistant (according to norm UNI 10560) - high water vapor permeability: Class V1 (>150 g/m<sup>2</sup>-24h according to norm UNI EN ISO 7783-2) - very low dirt pick-up (according to norm UNI 10792) - good filmability at low temperatures (according to norm UNI 10793) - UV resistant colors.

**Appearance:** smooth, velvety, very matt (according to norm UNI EN ISO 2813 gloss 0,7 ± 0,2% @85°).





cod **A101 | zip**  
**Quartz based paint for interiors and exteriors**



brush

roller

spray

Coverage	4 m <sup>2</sup> /l two coats
Dilution (v/v)	10 - 0% (water)
Touch dry	2 hours
Re-coat	min 12 hours

	Price in €	14 L	4 L			Average cost €/m <sup>2</sup>
<b>BIANCO (WHITE)</b>	Price per liter					
	Price per pack					
<b>BASE 350</b> Filling %: 94%	Price per liter					
	Price per pack					
<b>BASE 450</b> Filling %: 90%	Price per liter					
	Price per pack					
<b>COLORED</b> see note at page 9	Price per liter					
	Price per pack					
	Min. order q.ty	70	40			

**Description:** permeable and protective coating for interiors and exteriors; mainly composed of a co-polymer binder resistant to alkalinity of cement-based surfaces - aggregates such as quartz, silica and mica, selected pigments and special additives.

**Properties:** good elasticity at low temperatures - abrasion and wash resistant (according to norm UNI 10560) - water repellent - weather-resistant - very low dirt pick-up (according to norm UNI 10792) - UV resistant colors.

**Appearance:** slightly coarse, matt.



## DECORATIVE STUCCOS AND FINISHES

---





cod **A310 | evolution**  
Interior wall stucco



	Price in €		10 Kg		Average cost €/m²
BIANCO (WHITE)	Price per Kg				
	Price per pack				

**Description:** interior venetian plaster with a glazed spatula effect available in a wide range of colors; based on an alkali resistant acrylic emulsion binder, mineral compounds in the correct granulometric proportion, natural earths, oxides and inorganic pigments.

**Properties:** strong adhesion to the substrate - it is not prone to shrinkage - wash resistant- it allows surfaces to breath - good workability- easy to use- solvent-free (low VOC) - it can also be tinted in very dark color tones.

**Appearance:** glazed spatula effect, which is either glossy or opaque finish depending on application technique (Gloss level  $83 \pm 0,2\%$  @85°).

**Note:** the price of each color for this product depends on pigments quantity. Such price is available through the formulative software of the tinting system RIALTO REVOLUTION.



s.s. trowel



s.s. spatula

Coverage	0,7-0,9 kg/m² three coats
Dilution (w/w)	Ready to use
Touch dry	30 min
Re-coat	4 - 6 hours





cod **A415 | solution**  
**Siloxane glazed stucco for interiors and exteriors**



coming soon  
**rialto**  
**REVOLUTION**  
 COLORS FOR PROFESSIONALS

	Price in €		10 Kg			Average cost €/m <sup>2</sup>
BIANCO (WHITE)	Price per Kg					
	Price per pack					

**Description:** siloxane spatula stucco for interiors and exteriors composed of modified siloxane binders in water dispersion, selected mineral extenders, natural earths and oxides resistant to UV rays.

**Properties:** easy to use - high water repellency - alkali resistant - it allows walls to breath - excellent adhesion properties - not prone to shrinkage - wash resistant - solvent-free (low VOC).

**Appearance:** Glazed spatula effect, which is either glossy or opaque depending on the technique used to apply the product.

**Note:** the price of each color for this product depends on pigments quantity. Such price is available through the formulative software of the tinting system RIALTO REVOLUTION.



s.s. trowel



s.s. spatula

Coverage	0,7-1,0 kg/m <sup>2</sup> three coats
Dilution (w/w)	Ready to use
Touch dry	30 min
Re-coat	4 - 6 hours





cod **A400** | **stucco oro/argento/bronzo/ottone**  
Decorative stucco with metallic effect for interiors



s.s. spatula

Coverage	15 – 20 g/m <sup>2</sup>
Dilution (w/w)	Ready to use
Touch dry	15 min
Re-coat	1 hour

	Price in €				0,375 Kg	Average cost €/m²
	Price per pack					

**Description:** stucco finish with a metallic spatula effect for interiors. Available in colors gold (stucco oro), silver (stucco argento) bronze (stucco bronzo) and brass (stucco ottone). It is composed of resins, waxes and special metallic pigments.

**Properties:** excellent coverage if applied over the Evolution stucco used as basecoat. Evolution grants a perfect adhesion and contribute to the final metallic look - possible to obtain a full metallic effect or a veiled metallic effect depending on the application technique used - wash resistant.

**Appearance:** full metallic effect or veiled metallic shades over evolution.





cod **A300 | veneziano**  
Glossy spatula stucco for interiors



INTERIORS



	Price in €	25 Kg	5 Kg			Average cost €/m²
BIANCO (WHITE)	Price per Kg					
	Price per pack					

**Description:** glossy spatula stucco for interiors based on a vinyl-acetate-acrylic terpolymer resin, selected aggregates, particular additives, and a dry film preservative agent.

**Properties:** easy to polish by spatula - high level of gloss - good adhesion properties - not prone to shrinkage or detachments - allows the wall to breath - solvent-free (low VOC).

**Appearance:** soft and glazed spatula effect (Gloss level  $92 \pm 0,2\%$  @85°).

**Note:** the price of each color for this product depends on pigments quantity. Such price is available through the formulative software of the tinting system RIALTO REVOLUTION.

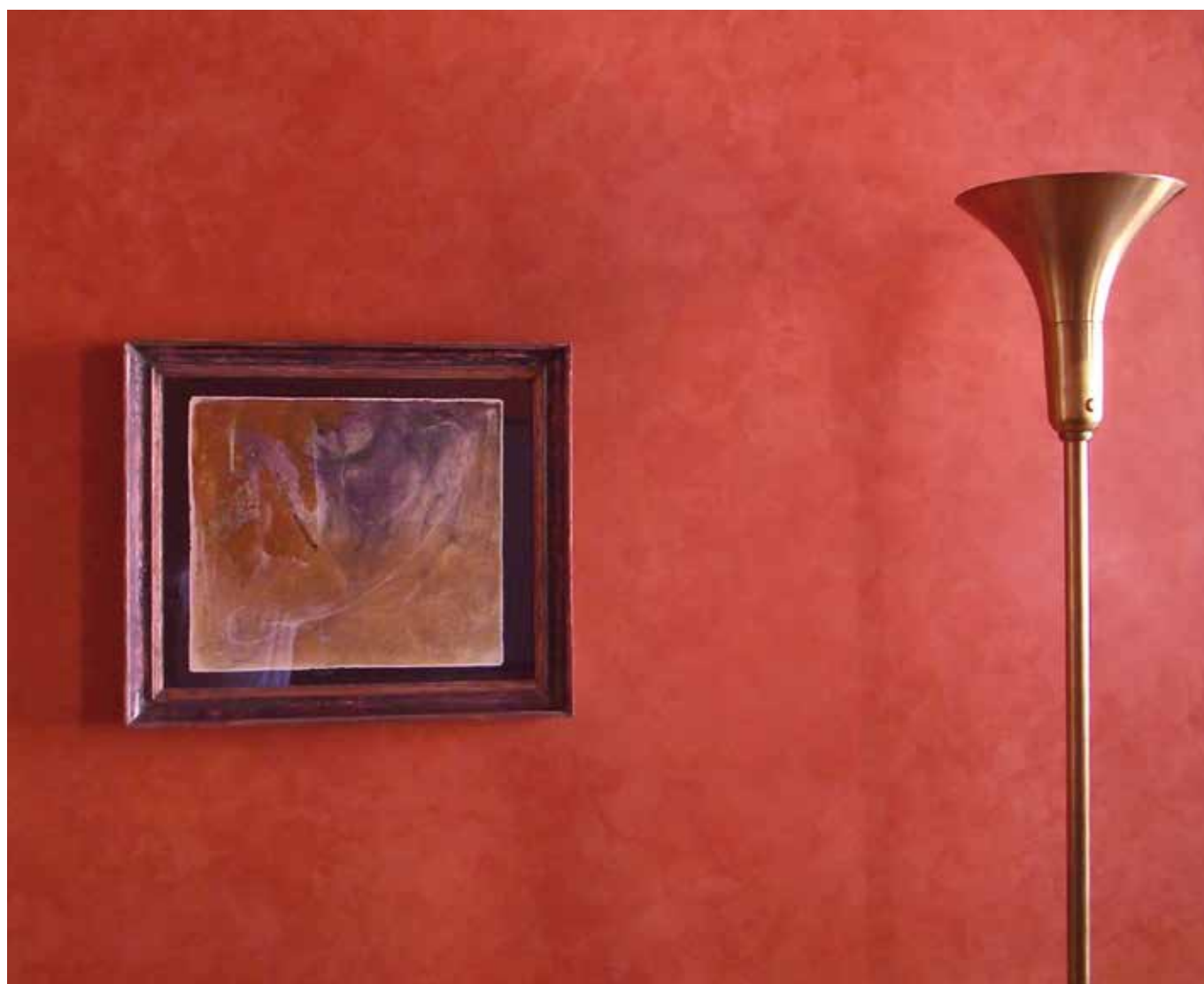


s.s. trowel



s.s. spatula

Coverage	4 m²/kg three coats
Dilution (w/w)	Ready to use
Touch dry	30 min
Re-coat	4 - 6 hours





s.s. trowel

Coverage	0,5 - 1 kg/m <sup>2</sup> two coats
Dilution (w/w)	Ready to use
Touch dry	1 hour
Re-coat	24 hours

cod **A340 | veneziano sottofondo**  
Fine leveling basecoat for veneziano



INTERIORS

	Price in €	25 Kg	5 Kg			Average cost €/m <sup>2</sup>
	Price per Kg					
	Price per pack					

**Description:** specific skim coat to prepare walls for the application of Veneziano finishing stucco. It allows to obtain a very smooth surface free of imperfections. It is composed of acrylic resins, extenders, fine talcs and additives to grant a good adhesion to the substrate. Ready to use and easy to apply.

**Properties:** designed to obtain perfectly smooth surfaces - easy to sand manually - it grants a perfect adhesion of Veneziano finishing coat - its pure white color in combination with the transparent color coats of Veneziano build up a three-dimensional final effect rich of depth and style, typical of the traditional venetian spatula stuccos.

**Appearance:** fine and smooth, matt, white.



s.s. trowel



plastic trowel

Coverage	1,2 kg/m <sup>2</sup> one coat
Dilution (w/w)	Ready to use
Touch dry	4 - 6 hours
Re-coat	24 hours

cod **A570 A340 | veneziano fondo p.b.**  
Basecoat for veneziano "puntinato" effect



INTERIORS

	Price in €	25 Kg				Average cost €/m <sup>2</sup>
	Price per Kg					
	Price per pack					

**Description:** specific basecoat to be used in combination with Veneziano sottofondo and Veneziano finishing coat to obtain a "puntinato" effect also similar to the ancient "encausto" effect. Ready to use and easy to apply.

**Properties:** basecoat based on acrylic binders, selected inerts with specific granulometry and colors - color of fondo p.b.: salt and pepper.

**Appearance:** "puntinato" effect.

BASECOATS

---





brush



roller

Coverage	3 m <sup>2</sup> /kg per coat
Dilution (w/w)	0 - 20% (water)
Touch dry	1 hour
Re-coat	6 - 8 hours

cod **A265 | baxil**  
Siloxane equalizing fiber reinforced basecoat  
for interiors and exteriors



	Price in €	21 Kg				Average cost €/m <sup>2</sup>
BIANCO (WHITE)	Price per Kg					
	Price per pack					

**Description:** white pigmented fiber reinforced basecoat that can be tinted with the tinting system rialto revolution. Product based on high penetrating acryl-siloxane resins and selected inerts of medium grain size (0,3 mm).

**Properties:** its specific formulation contributes to equalize the surfaces, hide possible microcracks present on the surfaces reducing the use of fillers. The presence of fibers limits the new formation of microcracks. It is an ideal basecoat over existing patched plasters being a good absorption equalizer. Particularly suitable as basecoat to colored thick plasters also suitable over dehumidifying plasters thanks to its good water vapor permeability.

**Appearance:** mat, white or colored in a similar tone to the final decorative finish, medium grain size (0,3 mm).



brush



roller



spray

Coverage	6 - 8 m <sup>2</sup> /l
Dilution (v/v)	Ready to use
Touch dry	2 hours
Re-coat	48 hours

cod **A433 | durasil**  
Permanent consolidating antiefflorescence primer  
for interiors and exteriors



	Price in €	20 L	5 L			Average cost €/m <sup>2</sup>
	Price per liter					
	Price per pack					

**Description:** consolidating, water repellent and water vapour permeable antiefflorescence priming coat. It is single-component solution, based on an alkylsilane emulsion suitable for interiors and exteriors.

**Properties:** it is a water-repellent and hardening treatment for plasters, reinforced concrete, bricks, and any other porous stone material - It can be used over traditional lime, lime and cement plasters, concrete, reinforced concrete, fiber cement, tuff - it reduces the risk of salt efflorescence's - it reduces the risk of infiltration through plaster cracks - it doesn't alter the water vapor permeability of the treated surfaces.

**Appearance:** transparent, colorless and water repellent.



brush



roller

Coverage	7 m <sup>2</sup> /kg one coat
Dilution (w/w)	0 - 10 % (water)
Touch dry	2 hours
Re-coat	24 hours

cod **A730 | eco fondo**  
Adhesion promoter with high hiding power  
for interiors



	Price in €	20 Kg	5 Kg			Average cost €/m <sup>2</sup>
BIANCO (WHITE)	Price per Kg					
	Price per pack					

**Description:** adhesion promoter with high hiding power for interiors. It is composed of a special vinyl copolymer and selected different-sized aggregates like marble dust, titanium dioxide and special additives.

**Properties:** high water vapor permeability - non-flammable - water thinnable - particularly suitable for plasterboard/drywall - very low VOC.

**Appearance:** sandy, mat.



brush



roller

Coverage	8 - 12 m <sup>2</sup> /l one coat
Dilution (v/v)	0 - 30 % (water)
Touch dry	2 hours
Re-coat	6 hours

cod **A735 | primer one**  
Fine white primer for interiors



INTERIORS

	Price in €		14 L	5 L		Average cost €/m <sup>2</sup>
BIANCO (WHITE)	Price per liter					
	Price per pack					

**Description:** smooth white hiding priming coat based on fine particle of polymer emulsions with high adhesion properties, fine aggregates such as white marble dust, titanium dioxide and a dry-film preservative agent.

**Properties:** high water vapor permeability - non-flammable - water-thinnable - particularly suitable for plasterboard/drywall - low VOC.

**Appearance:** smooth and mat, white.



brush



roller



spray

Coverage	4 - 5 m <sup>2</sup> /kg one coat
Dilution (w/w)	0 - 10 % (water)
Touch dry	4 hours
Re-coat	48 hours

cod **A720 | fondo di aderenza 1**  
All-round mineral adhesion primer based on silicates for exteriors



EXTERIORS

	Price in €		20 Kg	5 Kg		Average cost €/m <sup>2</sup>
	Price per Kg					
	Price per pack					

**Description:** all-round mineral adhesion primer based on potassium silicate, selected graded micronized aggregates like quartz, titanium dioxide, sands and special additives.

**Properties:** easy to apply by brush, roller or spray - it allows to equalize surfaces of different chemical nature (lime, silicate, siloxane, acrylic, silicate) - it grants a good adhesion and chemical compatibility with seasoned slaked lime finishes, silicate finishes and other finishes of organic nature - high adhesion properties.

**Appearance:** finely sandy, mat, white.



brush



roller



spray

Coverage	3 - 4 m <sup>2</sup> /kg one coat
Dilution (w/w)	0 - 10 % (water)
Touch dry	4 hours
Re-coat	48 hours

cod **A720 | fondo di aderenza 2**  
Coarse all-round mineral adhesion primer based on silicates for exteriors



EXTERIORS

	Price in €		20 Kg			Average cost €/m <sup>2</sup>
	Price per Kg					
	Price per pack					

**Description:** coarse all-round mineral adhesion primer based on potassium silicate, selected graded micronized aggregates like quartz, titanium dioxide, sands and special additives.

**Properties:** easy to apply by brush, roller or spray - it allows to equalize surfaces of different chemical nature (lime, silicate, siloxane, acrylic, silicate) - it grants a good adhesion and chemical compatibility with seasoned slaked lime finishes, silicate finishes and other finishes of organic nature - high adhesion properties.

**Appearance:** sandy, coarse, mat, white.



brush



spray

Coverage	2,5 m <sup>2</sup> /l
Dilution (v/v)	Ready to use
Touch dry	1 hour
Re-coat	48 hours

cod **A435 | isocal**  
**Water repellent anti-efflorescence's water vapour permeable and non film-forming permeating primer**



EXTERIORS

	Price in €	20 L	5 L			Average cost €/m <sup>2</sup>
	Price per liter					
	Price per pack					

**Description:** transparent, single-can solution based on oligomeric organosiloxane and aliphatic solvents.  
**Properties:** it gives to plasters and porous stones a good water repellency and protection from acid rains - it drastically reduces the risk of water penetration and salt extraction from walls - it does not alter the water vapor permeability of the treated surfaces - it is colorless - it penetrates deeply and do not change over time.

**Appearance:** transparent, colorless.



brush



roller



spray

Coverage	40 – 50 m <sup>2</sup> /l
Dilution (v/v)	1:8 (water)
Touch dry	1 hour
Re-coat	6 hours

cod **A280 | primer**  
**Penetrating fixing colorless priming coat for interiors and exteriors**



INTERIORS



EXTERIORS

	Price in €	20 L	5 L	1 L		Average cost €/m <sup>2</sup>
	Price per liter					
	Price per pack					
	Min. order q.ty			6		

**Description:** Penetrating fixing colorless priming coat for interiors and exteriors treated with selected additives in order to achieve particular penetrating properties and improve adhesion.

**Properties:** remarkably flexible - high adhesion properties - good water vapor permeability - water thinnable - non-toxic - high coverage.

**Appearance:** transparent, colorless.

# LEVELING PLASTERS





s.s. trowel



sponge trowel

Coverage	1,2 kg/m <sup>2</sup> /mm
Dilution (w/w)	1:2,5 (water/product)
Touch dry	2 hours
Re-coat	24 hours

cod **A665 | wallcem bianco**  
**White water vapour permeable levelling plaster**  
**for interiors and exteriors**



	Price in €	25 Kg				Average cost €/m <sup>2</sup> /mm
	Price per Kg					
	Price per pack					

**Description:** mineral levelling plasters for interiors and exteriors with high water vapor permeability; it is composed of white cement, high aluminum-content cement, hydrated lime, specially selected spherical sands, synthetic fibers, and additives. It is recommended as a finishing product, as well as to patch, repair and level walls and ceilings.

**Properties:** CE marked product according to norm EN 998-1 - mortar type GP - Adhesion > 0,5 N/mm<sup>2</sup> - flexural strength after 28 days > 50 Kg/m<sup>2</sup> - Thermal conductivity: 0,48 W/mk (according to norm UN EN 1015- 19) - Reaction to fire: class F - it allows maximum breathability - it is non-flammable and non-toxic - high abrasion resistance - not prone to shrinkage - excellent surface adhesion.

**Appearance:** FINE white trowelled plaster.



s.s. trowel



sponge trowel

Coverage	1,2 kg/m <sup>2</sup> /mm
Dilution (w/w)	1:2,5 (water/product)
Touch dry	2 hours
Re-coat	24 hours

cod **A660 | wallcem grigio**  
**Grey water vapor permeable levelling plaster**  
**for interiors and exteriors**



	Price in €	25 Kg				Average cost €/m <sup>2</sup> /mm
	Price per Kg					
	Price per pack					

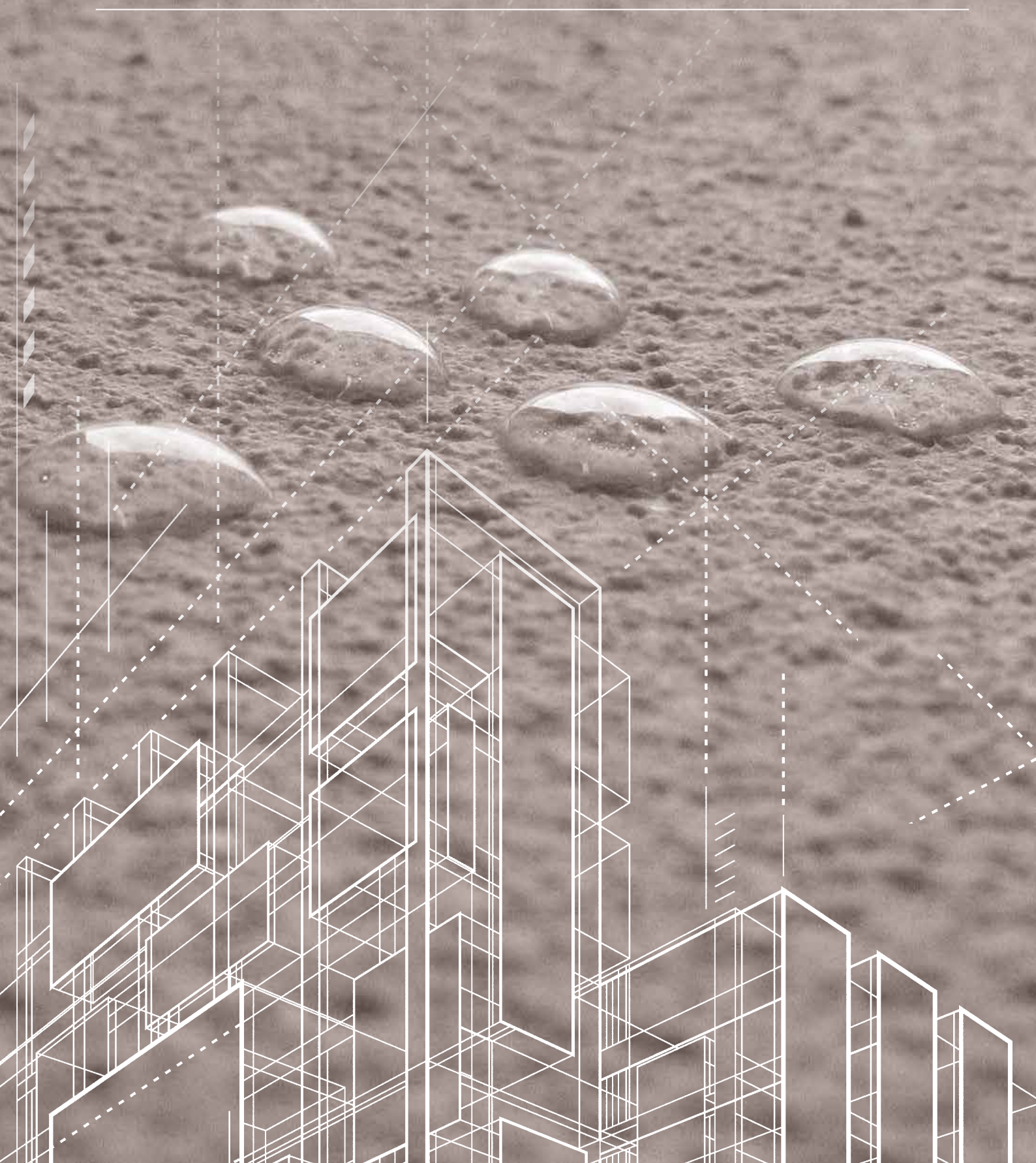
**Description:** mineral levelling plasters for interiors and exteriors with high water vapor permeability; it is composed of Portland cement, high aluminum-content cement, hydrated lime, specially selected spherical sands, synthetic fibers, and additives. It is recommended as a finishing product, as well as to patch, repair and level walls and ceilings.

**Properties:** CE marked product according to norm EN 998-1 - mortar type GP - Adhesion > 0,4 N/mm<sup>2</sup> - flexural strength after 28 days > 50 Kg/m<sup>2</sup> - Thermal conductivity: 0,48 W/mk (according to norm UN EN 1015- 19) - Reaction to fire: class F - it allows maximum breathability - it is non-flammable and non-toxic - high abrasion resistance - not prone to shrinkage - excellent surface adhesion

**Appearance:** fine grey troweled plaster.

# PROTECTIVE WAXES AND COATINGS

---





s.s. trowel



s.s. spatula

Coverage	10 m <sup>2</sup> /l
Dilution (v/v)	Ready to use
Touch dry	30 min
Re-coat	NA

cod **A560** | **cera d'arte**  
Protective wax for interiors



INTERIORS

	Price in €				1 L	Average cost €/m <sup>2</sup>
	Price per liter					
	Price per pack					

**Description:** blend of aliphatic hydrocarbons, paraffin and esterified and polyethylene waxes.

**Properties:** ready to use protective wax for interior walls. It is ideal to protect and make the acrylic venetian plasters veneziano and evolution water repellent.

**Appearance:** protective colorless wax.



spray bottle



sponge

Coverage	100 m <sup>2</sup> /l
Dilution (v/v)	1:15 (water)
Touch dry	60 min
Re-coat	NA

cod **A450** | **fix 210**  
Permeating water repellent for sinopia



INTERIORS

	Price in €				0,5 L	Average cost €/m <sup>2</sup>
	Price per liter					
	Price per pack					

**Description:** specific colorless finishing solution, it confers water repellency and the typical suede like effect to the interior slaked lime based decorative plaster sinopia.

**Properties:** neutralized solution based on amino-functional polydimethylsiloxane to be diluted 1:15 with water - it protects from dirt - makes the surface water repellent - confers a peculiar aesthetic effect.

**Appearance:** colorless, suede like to the touch.

cod **A650 | wax 15**  
Protective emulsion for lime based interior surfaces



brush



cloth

Coverage	7 m <sup>2</sup> /l
Dilution (v/v)	Ready to use
Touch dry	30 min
Re-coat	NA

	Price in €				1 L	Average cost €/m <sup>2</sup>
	Price per liter					
	Price per pack					

**Description:** blend of natural waxes, soap and water thinnable solvents. Suitable for polishing and protect interior plastered walls with decorative plasters and stuccos based on seasoned slaked lime. It contains water repellent agents to increase its protective properties.

**Properties:** ready and easy to use with a brush and a soft cloth - it doesn't change the aspect of the finish - tintable with inorganic tinting pastes - it protects from dirt reducing the liquid absorption.

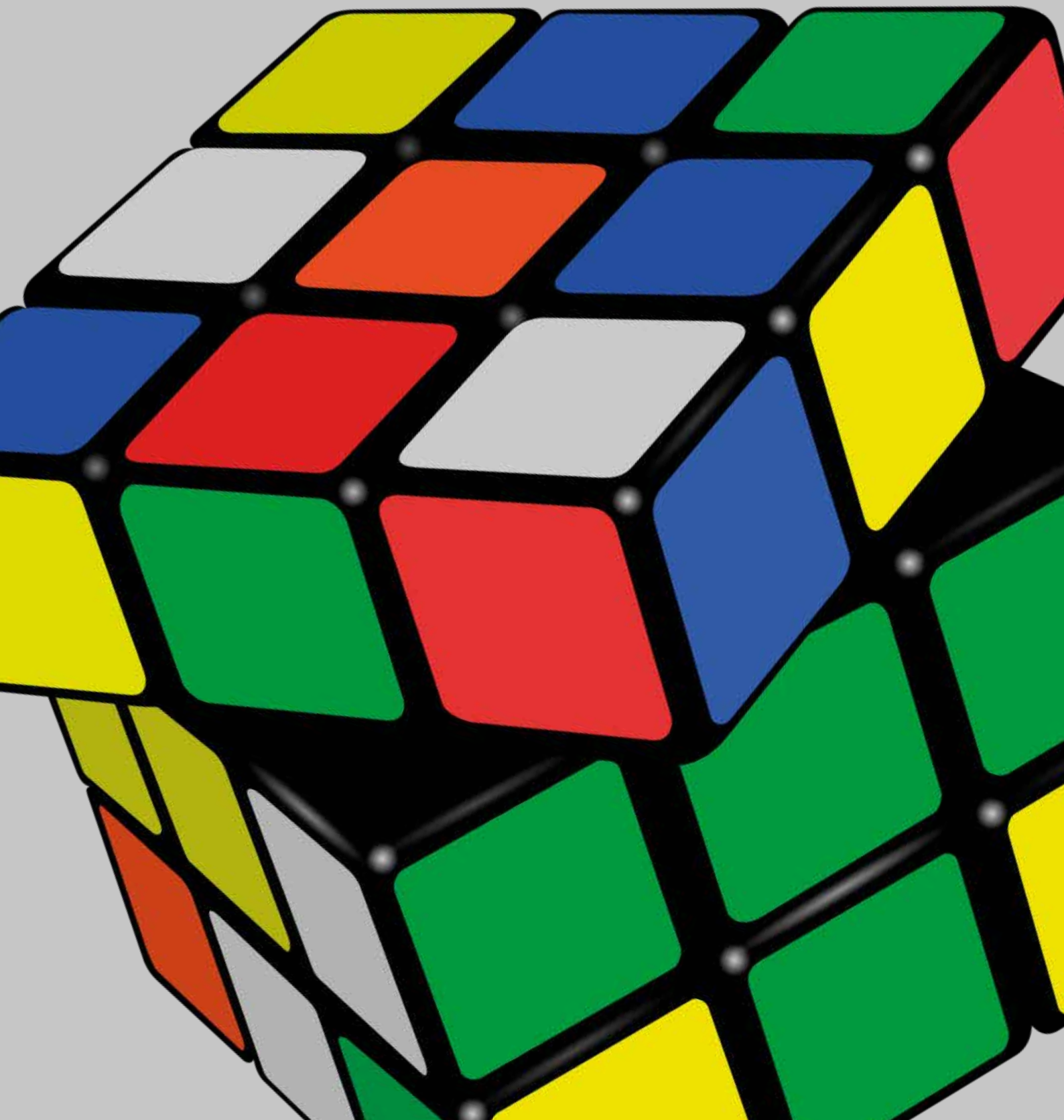
**Appearance:** colorless protective finish.





## PROBLEM SOLVING PRODUCTS

---





brush

Coverage	1,5 – 2,5 m²/l
Dilution (v/v)	Ready to use
Touch dry	NA
Re-coat	NA

cod **A440 | alkal 1**  
Acid cleaning agent for siliceous material



	Price in €		10 L			Average cost €/m²
	Price per liter					
	Price per pack					

**Description:** acid solution for cleaning bricks or other siliceous materials. It is a fluoride-based cleaning agent.

**Properties:** thanks to its high viscosity rialto alkal 1 easily adheres to vertical surfaces without excessive penetration into the treated material - easy to apply - limestone and marble should be cleaned with rialto **alkal 2** (alkal 1 is not suitable for these supports).

**Appearance:** Colorless.



brush

Coverage	1,5 – 2,5 m²/l
Dilution (v/v)	Ready to use
Touch dry	NA
Re-coat	NA

cod **A470 | alkal 2**  
Alkaline cleaning agent for limestone, concrete, travertine and marbles



	Price in €		10 L			Average cost €/m²
	Price per liter					
	Price per pack					

**Description:** alkaline cleaning agent based on sodium hydroxide for cleaning limestone, concrete, travertine and marbles.

**Properties:** thanks to its high viscosity alkal 2 easily adheres to vertical surfaces without excessive penetration into the treated material - bricks or other siliceous material should be cleaned with **alkal 1** (alkal 2 is not suitable for these supports).

**Appearance:** colorless.





brush



roller



spray

Coverage	4 – 8 m <sup>2</sup> /l
Dilution (v/v)	Ready to use
Touch dry	NA
Re-coat	NA

cod **A431** | **eco silan**  
**Permanent siloxane water repellent**  
**non film-forming solution**



EXTERIORS

	Price in €	20 L	5 L	Average cost €/m <sup>2</sup>
	Price per liter			
	Price per pack			

**Description:** transparent, water based, single-can solution based on alkylated oligomeric polysiloxanes with a high water vapor permeability.

**Properties:** invisible protective coating against alkali and acids - it does not alter the water vapor permeability of the substrate - it does not yellow over time - it adds a protective pearl effect (lotus flower effect) to the treated surfaces - UV resistant – low VOC.

**Appearance:** colorless, transparent.



brush

Coverage	3 m <sup>2</sup> /l
Dilution (v/v)	Ready to use
Touch dry	NA
Re-coat	NA

cod **A491** | **graffiti bio-remover**  
**Graffiti cleaner**



EXTERIORS

	Price in €	10 L	Average cost €/m <sup>2</sup>
	Price per liter		
	Price per pack		

**Description:** solution based on higher alcohols and derived terpenics. It is suitable to remove from facades and porous surfaces (marbles, cement, natural and artificial stones) undesired spray paints, enamels and bills and restore the original aspect of the surfaces. Graffiti bio-remover is suitable to remove graffiti from pretreated surfaces with rialto graffiti prevention. Not to be used over decorated plasters.

**Properties:** efficient dissolving properties of the paint film - not-toxic - residues of graffiti can be washed away by manual washing with hot water or by pressure washer.

**Appearance:** colorless, transparent.



brush

Coverage	3 - 4 m <sup>2</sup> /l
Dilution (v/v)	Ready to use
Touch dry	NA
Re-coat	NA

cod **A492** | **graffiti prevention**  
Colorless anti-graffiti siloxane protective solution for  
absorbing surfaces



	Price in €		10 L			Average cost €/m <sup>2</sup>
	Price per liter					
	Price per pack					

**Description:** protective coating based on siloxane suitable to protect any kind of surface from spray paints, enamels and from sticking up of bills, avoiding the penetration into the pores, even if already painted with mineral absorbent finishes, and, at the same time keeping constant the permeability and the aesthetic aspect of the finish.

**Properties:** it does not change the color tone or aspect of the finishes on which it is applied - graffiti can be easily removed manually using hot water or by pressure washer - the treated surfaces become water repellent and fouling resistant.

**Appearance:** colorless, transparent.





brush

Coverage	0.3 – 0.8 l/m <sup>2</sup>
Dilution (v/v)	Ready to use
Touch dry	NA
Re-coat	NA

cod **A110** | **idroverniciatore H315**  
All-round water based paint remover



INTERIORS



EXTERIORS

	Price in €			5 L		Average cost €/m <sup>2</sup>
	Price per liter					
	Price per pack					

**Description:** all-round water-based paint remover base on an environmentally friendly pyrrolidone compound dissolved in water, it is able to dissolve paints and decorative coatings from walls.

**Properties:** efficient dissolving properties on the majority of decorative systems - it works on thick coatings, paints and enamels based on emulsion resins like: acrylic, styrol-acrylic, esters of versatate acids, vinyl and different copolymers - its jelly structure reduces the risk of splashing - good penetration property and slow evaporation.

**Appearance:** light blue, jelly.



brush

Coverage	20 m <sup>2</sup> /l
Dilution (v/v)	1:50 (water)
Touch dry	NA
Re-coat	NA

cod **A480** | **neutral k1**  
Alkaline neutralising solution



EXTERIORS

	Price in €				1 L	Average cost €/m <sup>2</sup>
	Price per liter					
	Price per pack					

**Description:** blend of neutralizing agents with deeply penetrating detergent properties.

**Properties:** high coverage - it can be applied either by brush, roller or can be added directly to the water of the pressure washer - it penetrates deeply into the substrates previously treated with alkal 1.

**Appearance:** NA.



brush

Coverage	20 m <sup>2</sup> /l
Dilution (v/v)	1:50 (water)
Touch dry	NA
Re-coat	NA

cod **A480 | neutral k2**  
Acid neutralising solution



EXTERIORS

	Price in €				1 L	Average cost €/m <sup>2</sup>
	Price per liter					
	Price per pack					

**Description:** blend of neutralizing agents with deeply penetrating detergent properties.

**Properties:** high coverage - it can be applied either by brush, roller or can be added directly to the water of the pressure washer - it penetrates deeply into the substrates previously treated with alkal 2.

**Appearance:** NA.



Coverage	NA
Dilution (v/v)	2 – 4 % by weight (additive)
Touch dry	NA
Re-coat	NA

cod **A390 | sx 110-22**  
Permanently-active disinfectant solution



INTERIORS



EXTERIORS

	Price in €				0,5 L	Average cost €/m <sup>2</sup>
	Price per liter					
	Price per pack					

**Description:** disinfectant additive to prevent forming of microorganisms such as mould, algae, and lichens in paints, thick coatings and any other water-based system. Based on isotiazolone derivatives with low toxicity.

**Properties:** permanent protective effect - it prevents from mould growth - active against the majority of common mildew - suitable both for interiors and exteriors.

**Appearance:** NA.



Coverage	50 m <sup>2</sup> /l
Dilution (v/v)	1:10 (water)
Touch dry	NA
Re-coat	NA

cod **A530 | sx 5911**  
Concentrated liquid sanitising solution for walls



INTERIORS



EXTERIORS

	Price in €				0,5 L	Average cost €/m <sup>2</sup>
	Price per liter					
	Price per pack					

**Description:** broad-spectrum sanitizing solution based on isotiazolone derivatives with low toxicity, suitable for decorative water-based paint systems and as permanent protection of decorative thick coating systems.

**Properties:** broad-spectrum active protection - it prevents from mould attack - active against the majority of common mildew - suitable both for interiors and exteriors.

**Appearance:** NA.

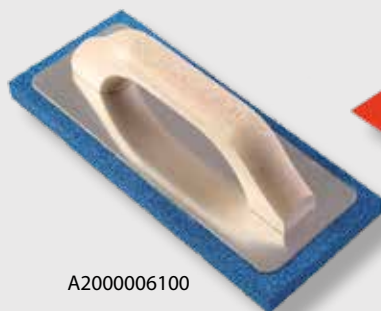
A professional plastering tool set including a large trowel, a smaller trowel, and a wooden float, all resting on a white surface next to a piece of brown insulation material.

PROFESSIONAL QUALITY  
PLASTERING TOOLS

---



A2000005800



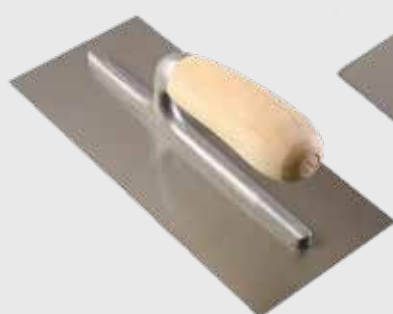
A2000006100



A2000005900



A2000007300



A2000006000



A2000006400



A2000009500



A2000007100

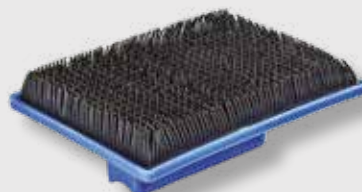


A2000006900



A2000008000

CODE	TOOL	€/piece
A2000006600	Linear effect rubber trowel	
A2000006400	rowel (stainless steel) cm. 20 x 8	
A2000006000	Trowel (stainless steel) cm. 28 x 12	
A2000005900	Trowel (plastic) cm. 28 x 13	
A2000006500	Linear effect plastic trowel	
A2000005800	Trowel (sponge) cm. 14 x 14	
A2000006100	Trowel (sponge) cm. 24 x 10	
A208027540011	Roller long handle cm. 11	
A207016510515	Large brush cm. 5 x 15	
A208027529611	Roller top mohair for enamels cm. 11 S96	
A208027529605	Roller top mohair for enamels cm. 5 S96	
A208027520311	Roller top bicolor cm. 11 D30	
A208027520511	Roller top white sponge cm. 11 S95	
A2000007400	Linear effect rubber roller	
A2000007200	Plastic roller bamboo effect	
A207015460100	Spalter 100 mm	
A207015461209	Spalter 120 mm	
A2000008000	Spatula (stainless steel) cm. 4	
A2000006900	Spatula (stainless steel) cm. 6	
A2000007100	Spatula (stainless steel) cm. 8	
A2000009500	Spatula (stainless steel) cm. 10	
A2000007300	Spatula (stainless steel) cm. 12	
A2000007600	Scratching brush	



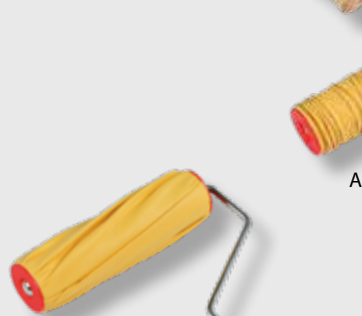
A2000006600



A207016510515



A2000006500



A2000007400



A2000007200



Bespoke Sample panel 20x20 cm

Cento Colori Color Chart  
Cod. A2000041301



Collezione Italia Fan deck 2023  
Cod. A2000001602



Lime at the speed of nature Booklet  
Cod. A2000009200



Antiqua Booklet  
Cod. A2000009208



Epoca Marmo catalogue  
Cod. A2000009227



Epoca Marmo color chart  
Cod. A2000009226



Application cycles reference guide  
Cod. A2000009229



Sinopia Booklet  
Cod. A2000009212



Tonasil Color chart  
Cod. A2000009201



I Materici Booklet  
Cod. A2000009210

Code	TECHNICAL - PUBLICITY MATERIAL	Price each net Euro
A2000009202	Concepts Booklet	
A2000009206	Lime Finishes Booklet	
A2000009200	Lime Booklet	
A2000009208	Antiqua Booklet	
A2000009212	Sinopia Booklet	
A2000009204	Epoca Marmo Booklet	
A2000009800	Mediterraneo Booklet	
A2000009214	Finish Booklet	
A2000009213	Water Based Paints Booklet	
A2000009201	Tonasil Color chart	
A2000009210	I Materici Booklet	
A2000040901	Antiqua Color chart	
A2000019700	Elastomeric treatment leaflet	
A2000020000	Technical data sheets collection	
A2000019500	General leaflet	
A2000019300	Velasil leaflet	
A2000041301	Cento Colori Color Chart	
A2000001602	Collezione Italia Fan deck 2023	



### Color Wall Dimensions

Length: 310 cm

Height: 265 cm

Width: 50 cm

(100 cm when wardrobe doors are open)



## COLOR WALL

# The Color Tools WeAreColor 2023

## • Color Book Esterni

480 sample color cards 15x23cm: 240 Storia and 240 Archicolor

Price	
-------	--

## • Color Book Interni

480 sample color cards 15x23cm: 240 Tenui and 240 Intensi

Price	
-------	--

## • Color Book I Colori di Andrea

83 sample color cards 15x23cm: I Colori di Andrea, Shades, Oro

Price	
-------	--

## • Color Book Home Design

120 sample color cards 15x23cm

Price	
-------	--

## • Color Samples Home Design

120 sample color cards 15x23cm

Price per sample color card	
Single color package and multiples	pc. 10

## • Color Chart Home Design Interni

120 colors

Price per piece	
Package and multiples	pc. 5

## • Color Tester Home Design

120 colors - Mat water enamel s.789 - 120 colors

Price per piece	
Multiples for each color choice	pc. 4

Pictures present in this document are provided for illustrative purposes and do not constitute contractual elements. Total or partial reproduction of the content of this catalogue without written authorisation from rialto is prohibited.



**rialto**

via caduti sul lavoro, 7 - z.i. noghere

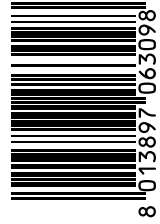
34015 muggia - trieste - italy

tel. +39 040 9897300

[rialto@rialto-colors.com](mailto:rialto@rialto-colors.com) - [www.rialto-colors.com](http://www.rialto-colors.com)

rialto is a brand of: COVEMA Vernici S.p.A.

Product Code: AZ00003233



Ed. 05/2023