



# ANTIQUA

seasoned slaked lime based mineral decorative finishing plaster



*rialto antiqua*  
is a natural decorative  
finish for interiors and  
exteriors based on  
slaked lime that has  
been seasoned for 24  
months, manufactured  
in Italy according to  
traditional criteria and  
formulated with the  
best raw materials.

*Designed for the  
demanding restoration  
requirements for  
historic buildings  
and for the creative  
research of decorative  
effects and the color  
depth of contemporary  
architecture.*

SUMMARY

THE NATURE OF THE PRODUCT ..... 4

THE GREEN SPIRIT ..... 6

ANTIQUA ..... 8

    rialto antiqua 1 steel trowel “lamato” effect ..... 10

    rialto antiqua 1 sponge trowel “frattazzato” effect ..... 16

    rialto antiqua 2 sponge trowel “frattazzato” effect ..... 22

EFFECTS ..... 27

    VEILED EFFECT ..... 28

    AFFRESCO EFFECT ..... 32

    TEXTURED EFFECTS ..... 36

RESTORATION ..... 51

    PRESERVING AND PROTECTING THE HISTORICAL ARCHITECTURAL HERITAGE ..... 52

    THE CONSERVATIVE RESTORATION ..... 54

    THE HISTORICAL COLORS OF RIALTO ANTIQUA ..... 58

    A SELECTION FROM THE “CENTO COLORI” COLOR COLLECTION ..... 59

    THE COLOR RANGE ..... 60

    TECHNICAL SUPPORT AND TRAINING ..... 61



## THE NATURE OF THE PRODUCT

**rialto antiqua** is a seasoned slaked lime-based decorative plaster for interiors and exteriors, formulated according to traditional criteria and using the best Italian raw materials. Thanks to its simple, handcrafted nature, it can meet both the demanding specifications typical of historic building restoration and the creative research of new colors and effects typical of contemporary architecture, which is increasingly sensitive to the sustainability of the materials used in projects.

### The base recipe

Long-seasoned magnesiatic slaked lime, fine ground selected authentic white Carrara marble grains, colored earths and inorganic oxides are the main ingredients of this colored finish.

Since the time of the Roman Empire, the Apuan Alps have contributed to embellishing the buildings and structures of the Italian territory by providing this "shining stone"<sup>1</sup>, the only of its kind in the world.

The peculiarity of this metamorphic rock is that it reflects light in a characteristic way, emphasising color and light and dark shades.

1: translation of the original name, "mármaron", in ancient Greek.





## THE GREEN SPIRIT

### CO<sub>2</sub>

Seasoned slaked lime, a third of the ingredients in the product's recipe, is still today obtained in a furnace following the traditional method. Because of the chemical composition of this air-hardening lime, once the product is applied, it begins to reabsorb a good portion of the CO<sub>2</sub> emitted during the production process, referred to as the so-called carbonatation phase. This process transforms it into calcium carbonate (stone). Traditional slaked lime holds a special record in this balance of emissions and carbonatations: as much as 60-62% of the CO<sub>2</sub> is re-absorbed, drastically reducing the permanent emissions in the atmosphere.

Hydrated dolomitic lime and calcic air-hardening lime perform at 53-56%, while hydraulic lime performs at 26% and the other various types of cement do not exceed 1%. Choosing a seasoned slaked lime-based finish for your project is an excellent sustainable, ecological choice.

### Breathability

By nature, unlike acrylic-based finishes, slaked lime-based coatings do not create a barrier to water vapour transmission but instead they promote this exchange.

Dry walls help guarantee a healthy, welcoming environment that preserve their characteristics over time.

### Biocides

The high pH (12.5/13.5) of the finished product itself constitutes a basic environment with antiseptic properties, contributing to purifying living spaces and improving their liveability.

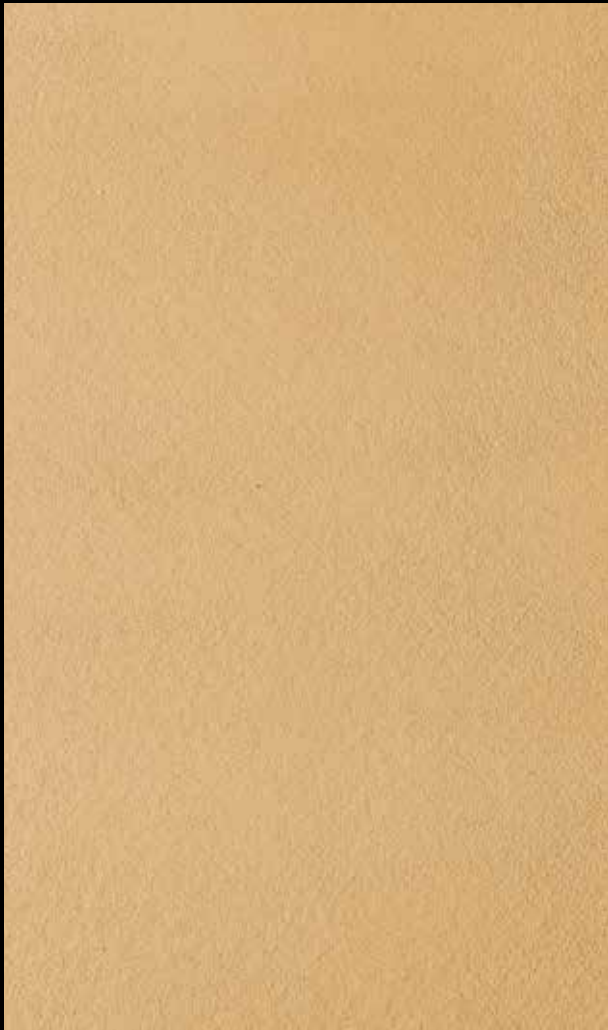
**rialto antiqua** simply does not contain added biocides.





# ANTIQUA

Elegant decorative plaster with an especially versatile structure for better workability and creative possibilities. Quick, easy application, available in two versions: **rialto antiqua 1** (fine, uniform grain) and **rialto antiqua 2** (rustic look).



**rialto antiqua 1** steel trowel "lamato" effect  
color **024 clio**  
from the rialto "CENTO COLORI" color chart for lime finishes



**rialto antiqua 1** sponge trowel "frattazzato" effect  
color **024 clio**  
from the rialto "CENTO COLORI" color chart for lime plaster



**rialto antiqua 2** sponge trowel "frattazzato" effect  
color **024 clio**  
from the rialto "CENTO COLORI" color chart for lime finishes



# ANTIQUA

rialto antiqua 1 steel trowel “lamato” effect

The extraordinary structure of this plaster and its slow drying allow applications on walls that change their appearances and shades. It can be levelled with a steel trowel to obtain smoother surfaces. A second coat of the product compacts the surface and makes it solid through pressing and polishing the plaster, enhancing the texture and color. **rialto antiqua**'s characteristics makes it suitable both for classic style and refined contemporary architecture.



rialto antiqua 1 steel trowel “lamato” effect  
color 039 ermione  
from the rialto “CENTO COLORI” color chart for lime plaster





rialto antiqua 1 steel trowel "lamato" effect  
color 061 patrasso  
from the rialto "CENTO COLORI" color chart for lime plaster



rialto antiqua 1 steel trowel "lamato" effect  
color 076 giacinto  
from the rialto "CENTO COLORI" color chart for lime plaster





rialto antiqua 1 steel trowel "lamato" effect  
color 089 orione  
from the rialto "CENTO COLORI" color chart for lime plaster



## ANTIQUA

### rialto antiqua 1 sponge trowel "frattazzato" effect

**rialto antiqua** is a fine colored plaster in its most traditional form. The long-seasoned slaked lime of which it is composed is the reason for its extraordinarily versatile workability.

A structure that is simple to work with, that easily recreates elegant, timeless light and dark tones.

Its traditional application is a sponge trowel finish: a smooth, simple method that preserves the intrinsic properties of its components including high breathability, resistance to wear over time, and antistatic and natural anti-mould properties.



**rialto antiqua 1** sponge trowel "frattazzato" effect  
color **023 cefalonia**  
from the rialto **"CENTO COLORI"** color chart for lime plaster





rialto antiqua 1 sponge trowel "frattazzato" effect  
 color 046 fenice  
 from the rialto "CENTO COLORI" color chart for lime plaster



rialto antiqua 1 sponge trowel "frattazzato" effect  
 color 019 berenice  
 from the rialto "CENTO COLORI" color chart for lime plaster





rialto antiqua 1 sponge trowel "frattazzato" effect  
color bianco  
from the rialto "CENTO COLORI" color chart for lime plaster



## ANTIQUA

### rialto antiqua 2 sponge trowel "frattazzato" effect

**rialto antiqua 2.** Contains a small quantity of black carbonates. This small presence creates colored surfaces with a finely rustic appearance.

The high absorption of the mineral structure of **rialto antiqua 2** gives creative colored shades. The two-coat application of the siloxane veiled **rialto velasil** adds water repellency to the surface and depth to the chromatic effect, thanks to its transparent coloring property.



rialto antiqua 2 sponge trowel coarse "frattazzato" effect  
color 038 atena  
from the rialto "CENTO COLORI" color chart for lime plaster





rialto antiqua 2 sponge trowel course "frattazzato" effect  
color 053 pericle  
from the rialto "CENTO COLORI" color chart for lime plaster



rialto antiqua 2 sponge trowel coarse "frattazzato" effect  
color 020 diomede  
from the rialto "CENTO COLORI" color chart for lime plaster



# EFFECTS



# VEILED EFFECT



rialto antiqua 1 color bianco  
+ rialto velasil color mattone and paglierino

## rialto velasil, applications

The application of **rialto velasil** on **rialto antiqua 1** and **2** creates customised veiled effects with one or more colors. This finish is suitable for both interior and exterior walls. The effect can be a solid color or multiple overlapping colors. The **rialto velasil** application method can be applied by brush or with various other tools to obtain the most varied aesthetic effects.

## rialto antiqua 1 color bianco sponge trowel

Sponge trowel finishing followed by application of **rialto velasil**, for a two-tone veiled effect with a single coating applied by brush in **rialto velasil** color **mattone** and the following brush coating of **rialto velasil** color **paglierino**.



# VEILED EFFECT



rialto antiqua 2 color bianco  
+ rialto velasil color meriggio

**rialto velasil, the technology**

**rialto velasil** is a highly breathable, single-component siloxane veiled effect for exteriors and interiors composed of oligomeric siloxanes, colored with UV stable pigments. **rialto velasil** combines breathability and water repellency with a veiled, delicate aesthetic effect.

The use of **rialto velasil** over **rialto antiqua** provides protection against acid rain and adds water repellency to the finish while still maintaining the characteristic breathability properties of **rialto antiqua**.

**rialto antiqua 2** color **bianco** sponge trowel effect with sponge trowelling with **rialto velasil** for a single-color veiled effect coat, applied with a large flat brush.



## AFFRESCO EFFECT

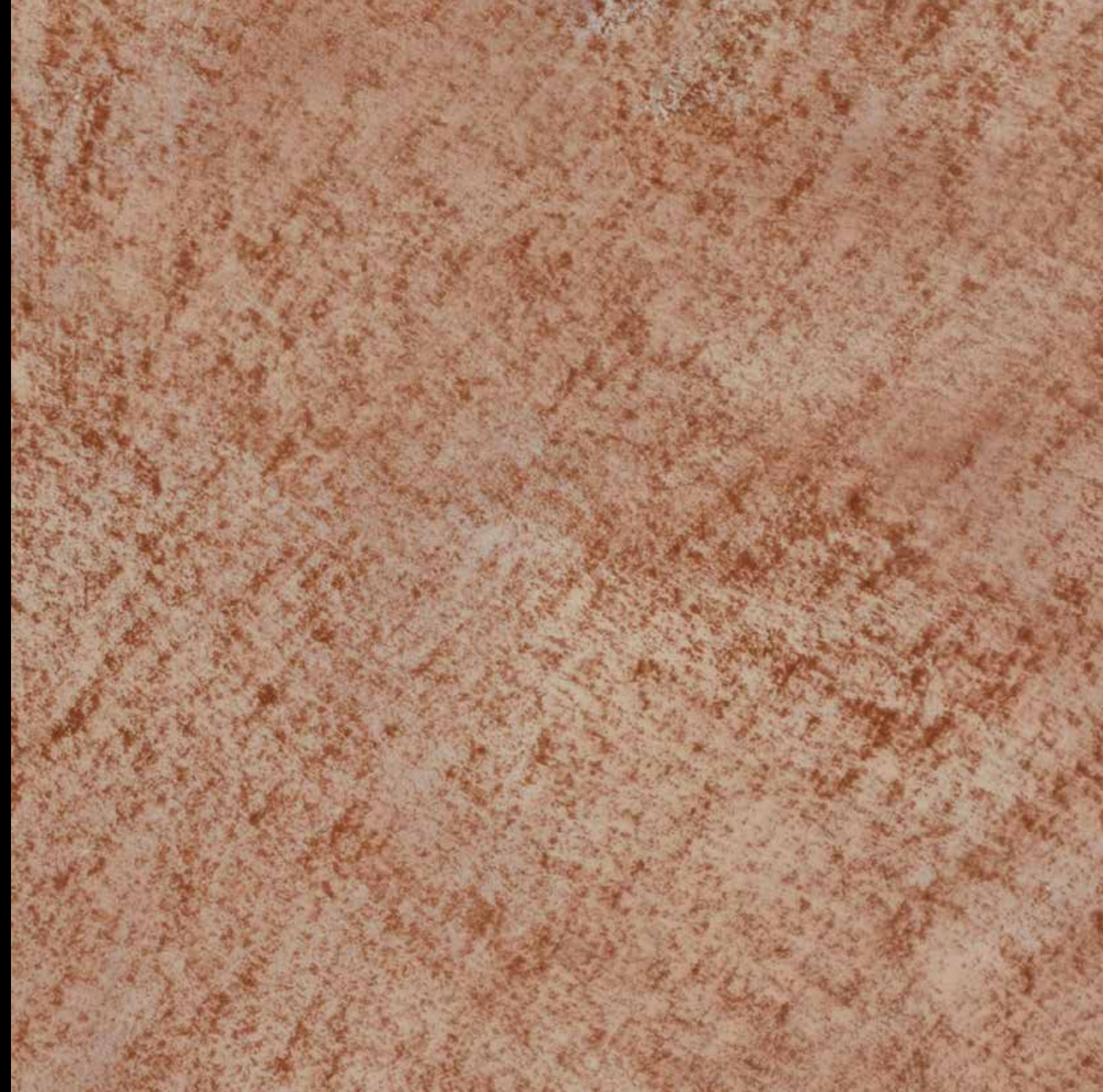


rialto antiqua 1 color 079 tegea  
+ epoca spatolato color S001

### The affresco technique

The technique of applying a slaked lime-based stucco over a decorative lime based plaster is a rare technique possible thanks to the use of these traditional high quality products: **rialto antiqua** and **rialto epoca spatolato**.

As a result of their content of long-seasoned magnesiatic slaked lime, **rialto epoca spatolato** stucco and **rialto antiqua 1** plaster combine perfectly for decorations with this ancient application method, which is however more contemporary than ever thanks to the creative possibilities that it can offer as well as the natural and ecological characteristics of the products.





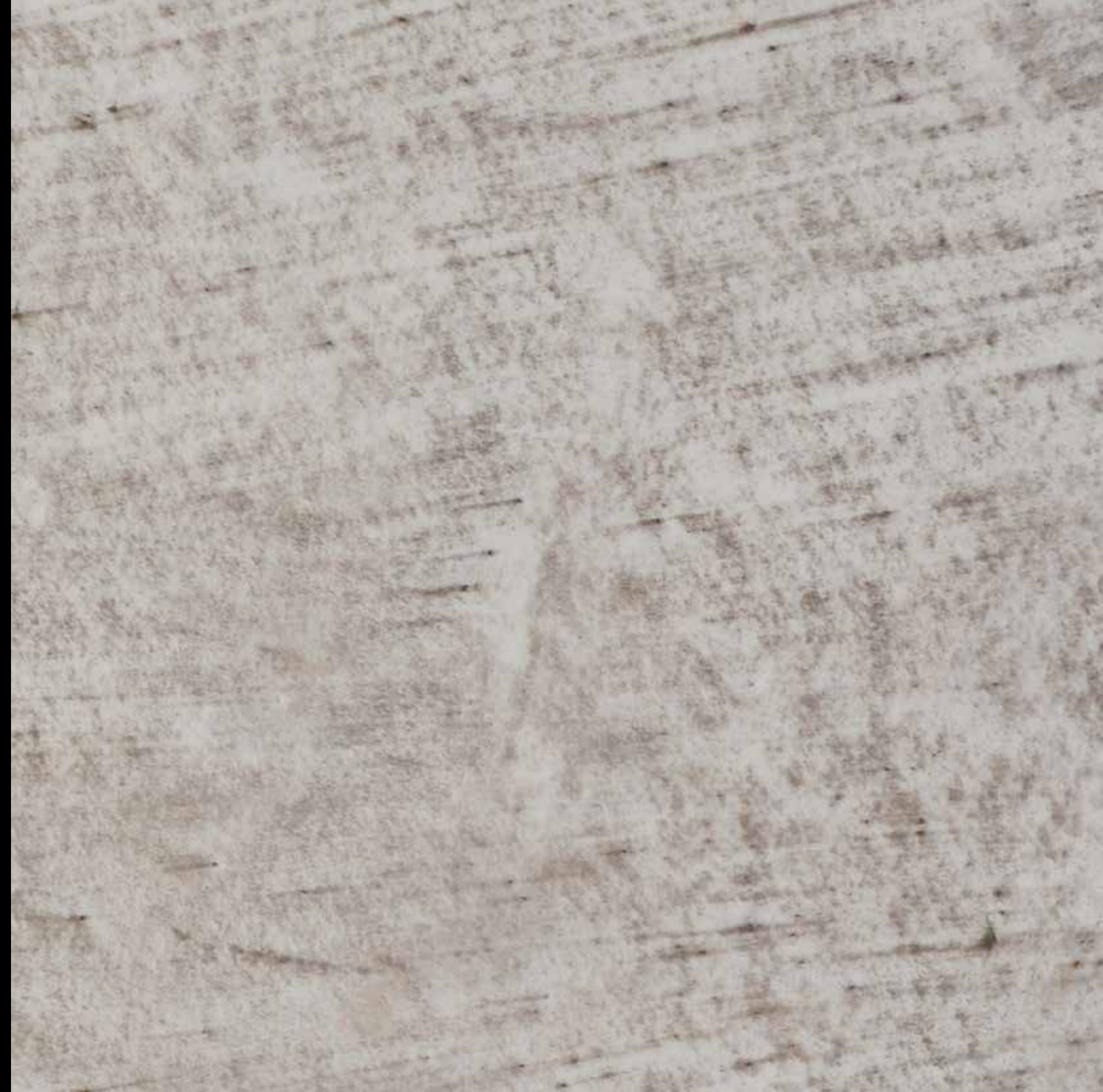
## AFFRESCO EFFECT



rialto antiqua 1 color bianco  
+ cocchiopesto + epoca spatolato color bianco

The effect is obtained by applying **rialto epoca spatolato** over **rialto antiqua 1** with the steel trowel lamato effect. At least 24 hours, and no more than 2-3 days, after application of **rialto antiqua 1** with the steel trowel, the substrate should be sprayed with clean water and then **rialto epoca spatolato** should be applied with a stainless steel trowel or spatula on top.

The wet plaster will ensure that the slaked lime which is not yet carbonatated that is in it and the one which is in the stucco will chemically bond, forming a decorative system of the two materials joined together in a single body. This technique can be used with similar or contrasting colors, with a more or less glossy finish. The blending in of **rialto antiqua 1** added with the natural "cocchiopesto" brick powder, creates the base for the "cocchiopesto" effect, called after the ancient Roman building technique. This mixture will then be finished with **rialto epoca spatolato** to give the stucco finishing effect of the surface. The blending of **rialto antiqua 1** with the "cocchiopesto" powder gives the product greater water repellency. Moreover, this blending develops a hydraulic hardening which combines with the typical air-hardening of slaked lime-based products.





## TEXTURED EFFECTS

---



### Travertino stone effect

Colour. Natural colour.

The beauty of a texture, the interpretation of a style, the colour that characterizes it. All essential elements of a decorative project that has the power to transform simple walls into surfaces full of colour, expressiveness and harmonious beauty.

**rialto antiqua 1 color 030 demetra**  
steel trowel application



## TEXTURED EFFECTS

---



**rialto antiqua 1** color **029 creta**  
steel trowel application

Inspiration, experimentation and creativity find in **rialto antiqua** an extraordinary mean of artistic expression. The high workability gives the opportunity to create refined and elegant surfaces with a simple application technique. A versatile material which offers various interpretations of textures, colors and effects.



## TEXTURED EFFECTS



**rialto antiqua 1** color **bianco** steel trowel application  
+ **rialto velasil** color **v316**, **v453** and **gridellino**

### Stencil effect

Traces and patterns can be obtained with the experimentation of the use of unconventional tools for the application of **rialto antiqua**. Stencils can be used to apply patterns in relief.

The use of **rialto velasil** on top of **rialto antiqua 1** color **bianco**, adds a colored deep cloudy effect. **rialto velasil** may be applied in more coats, in this case each coat has a different color tone: **v316**, **v453** and **gridellino**.





## TEXTURED EFFECTS

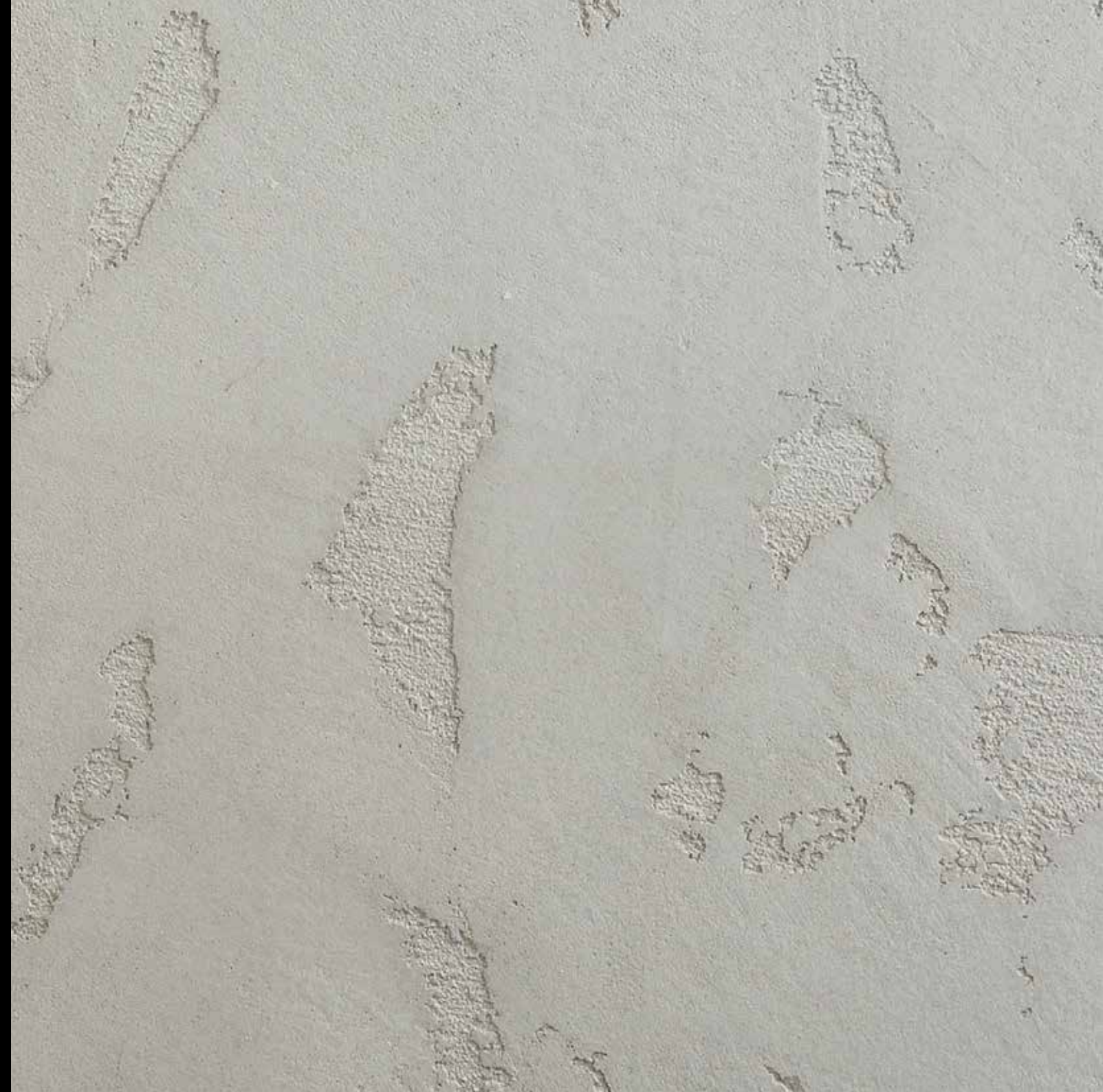


**rialto antiqua 1** color **010 arianna**  
steel trowel application

### Concrete effect

The texture of **rialto antiqua 1** is the ideal surface to create interpretations of the contemporary style and the application of the concrete effect.

The workability and consistency of the slaked lime finds the perfect product for contemporary decorative effects. The wide range of colours in the **rialto colour collections** include a complete variety of shades of grey to choose the best tone for each decorative project.





## TEXTURED EFFECTS



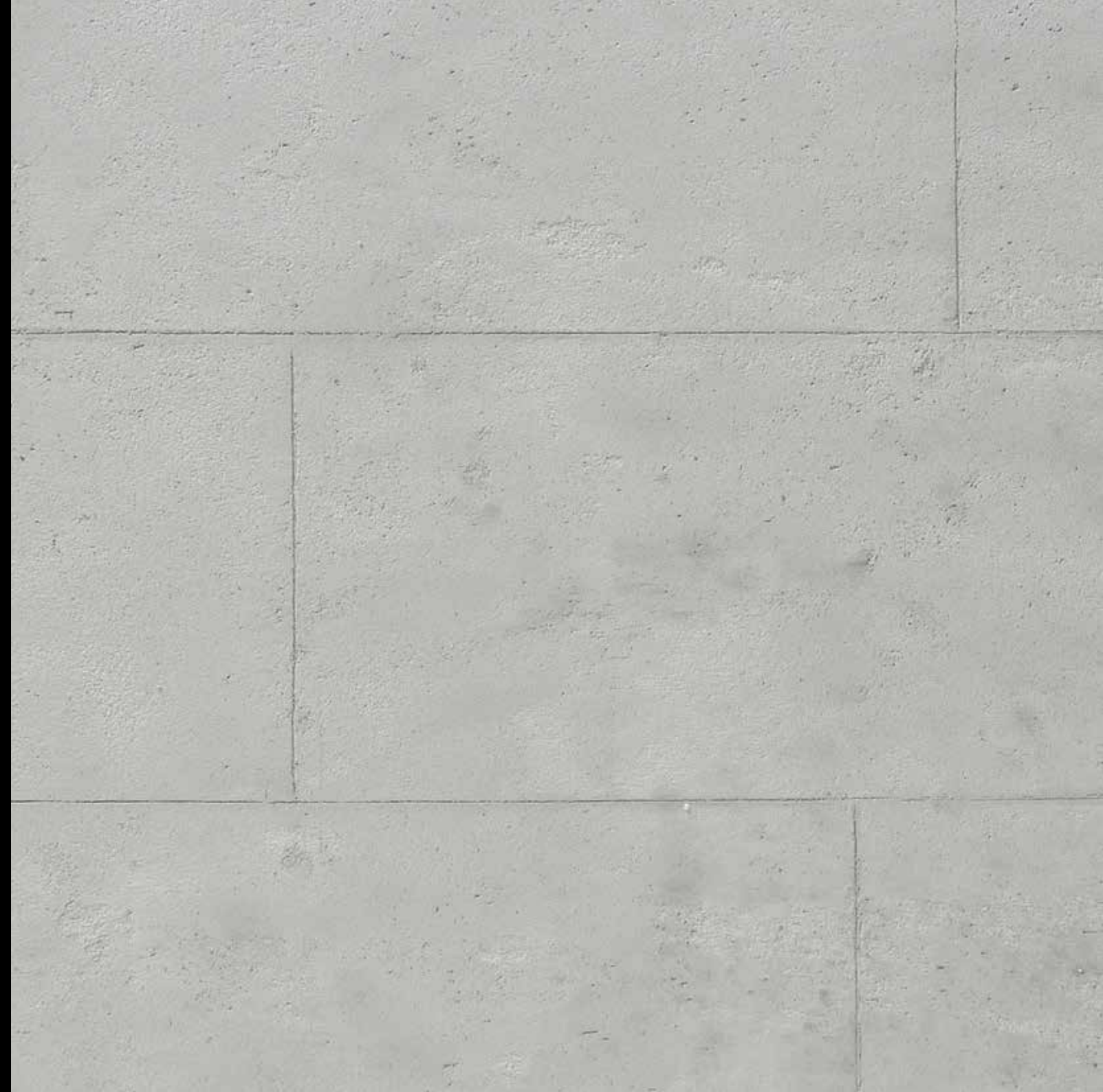
rialto antiqua 1 color 011 aristide  
steel trowel application

### Brick wall effect

Thanks to **rialto antiqua 1**'s structure and workability, it is possible to create patterns and to imprint effects in the thickness of the surface.

The use of different tools give the opportunity to create different textures that need to be imprinted in the plaster before **rialto antiqua** has completely dried.

The **rialto stainless steel trowels** are the ideal tools to work the surface and to create the decorative textures and effects on the walls.





TEXTURED EFFECTS



rialto antiqua 1 color 084 cassiopea steel trowel application  
+ rialto wax 15

Opaque marmorino effect

The marmorino effect obtained with **rialto antiqua 1** is opaque.  
The application of **rialto antiqua 1** in the “lamato” effect, with the addition of the protective coating of **rialto wax 15** has a water repellent property.  
**rialto wax 15** is a water based solution formulated using natural waxes, soap and siloxane additives which add water repellency to surfaces.



## TEXTURED EFFECTS

---



**rialto antiqua 1 color 011 aristide**  
steel trowel application

**rialto antiqua 1** may be applied in a rough effect with a three dimensional surface that can be modelled with a variety of tools. The structure of **rialto antiqua 1** permits the application of a wide range of decorative effects.







# RESTORATION



## PRESERVING AND PROTECTING THE HISTORICAL ARCHITECTURAL HERITAGE

In Italy, the “Soprintendenze” are the national preservation organisations depending from the Ministry of Cultural Heritage, which are focused on the task of protecting, preserving and restoring architectural heritage as well as protecting the environment and landscape

The Directorate General for Architectural and Landscape Heritage has the institutional function of protecting and enhancing the architectural heritage and landscape of the Italian territory. Its role is to put in place any and all instruments able to ensure the material and cultural preservation of the protected heritage. Preservation means ensuring the knowledge, enhancement and dissemination of the architectural and landscape heritage of the nation, whether has been created by man or by nature over the centuries. Only the awareness of its value can guarantee respect, the sense of belonging and it being handed down to future generations. All the restoration operations envisaged by the Superintendence arise from an in-

depth analysis of the current conditions, with diagnostic evaluations to determine the causes of deterioration and acquire knowledge on the techniques and materials used in the past. The following phase considers implementing the solutions for intervention to resolve the causes of decay. The aim is to identifying cycles of intervention that are as much efficient as possible and compatible with the pre-existing materials. This applies for structural consolidation and protection against rising moisture in walls. The finishing effect needs to be compatible with the existing plasters and lime-based paints and with their vibrant cloudy brightness typical of the facades of historic town centres.

**rialto** is open to study suggestions and evaluate requests from customers and professionals operating in this field. The techniques and secrets of the arts are communicated with the objective of guaranteeing the perfect use of the products as well as to growing that artisan knowledge, the immeasurably valuable heart of the Italian cultural heritage, to which **rialto** intends to continue to make its contribution to conservation and renewal.



1.



2.

### The phases of restoration:

- 1. Facade restored with **rialto** restoration systems. The materials used are **rialto malta grezza**, **rialto malta fine** and **rialto antiqua 1**. The stone elements have been treated with **rialto alkal 2** e **rialto neutral k2** stone cleaning products.
- 2. Before restoration work, the facade was showing damages and problems related to the detachment of the finish and the plaster surfaces. The stone elements showed smog and atmospheric dust deposited over the years.
- 3. Reconstruction of the facade stringcourses with **rialto malta grezza**, **rialto malta fine** using handcrafted moulds on pre-existing friezes anchored with precise mechanical fixings.
- 4. Manual reconstruction of friezes with **rialto malta grezza**, **rialto malta fine**.

The friezes and plasters have been reconstructed using **rialto malta grezza**, **rialto malta fine** with conservation restoration techniques. To restore the ancient splendour to the facade, the finishes used were **rialto antiqua 1** and some friezes are painted with **rialto epoca ottocento**, the slaked lime-based paint.



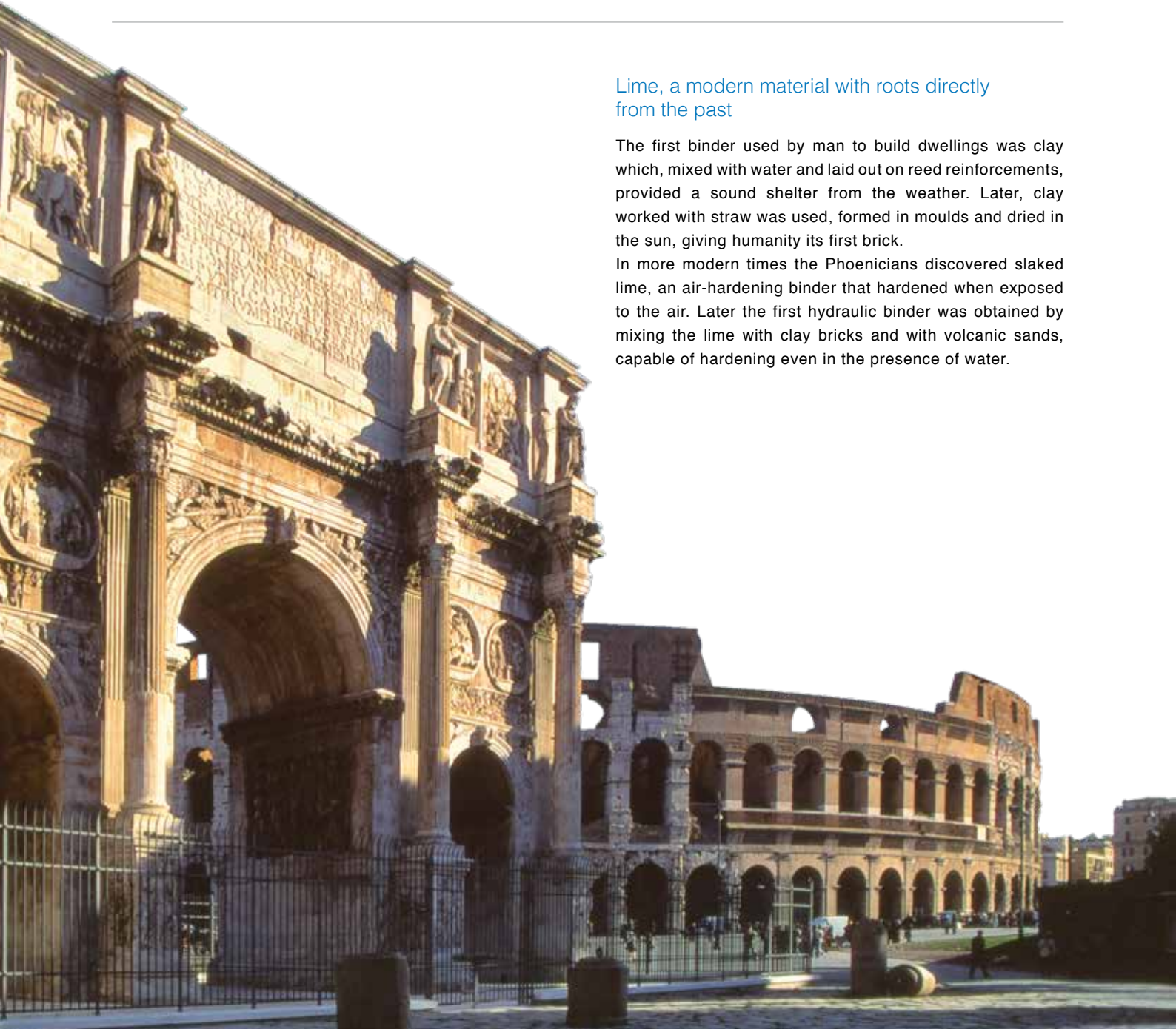
3.



4.



## THE CONSERVATIVE RESTORATION



### Lime, a modern material with roots directly from the past

The first binder used by man to build dwellings was clay which, mixed with water and laid out on reed reinforcements, provided a sound shelter from the weather. Later, clay worked with straw was used, formed in moulds and dried in the sun, giving humanity its first brick.

In more modern times the Phoenicians discovered slaked lime, an air-hardening binder that hardened when exposed to the air. Later the first hydraulic binder was obtained by mixing the lime with clay bricks and with volcanic sands, capable of hardening even in the presence of water.

During the Roman Empire, lime was widely used as a building material, and still today we can find monuments and works in excellent structural conditions thanks to the construction characteristics of this remarkable material. Vitruvius, a Roman architect and treatiser commonly cited by those who analyse the history of building materials, lived between the age of Caesar and the early years of the reign of Augustus. In his treatises, he devoted ample space to lime and its use in public and private works.

In the Middle Ages and especially in the Renaissance, his writings were a fundamental reference for all architects. The experience on the building site was the only source of knowledge, jealously guarded by the artisans. Today, we fully understand these phenomena and have put this knowledge toward formulations which have been improved and proven over time.





Systems for the conservation restoration of the historic building facades with plaster mortars and seasoned slaked lime-base finishes

The complete cycle required for the conservation restoration of historical facades is composed of **rialto malta grezza** and **rialto malta fine** plaster mortars and slaked lime-base finishes such as **rialto antiqua**. The use of these products ensures a stratigraphy of materials obtained in compliance with the strictest tradition, with unique and

essential characteristics for the reconstruction of walls and antique structures in accordance with the Environmental and Cultural Heritage Superintendence requirements. Slaked lime is seasoned for 3 months when used in the preparation of “**malta grezza**” and “**malta fine**” wet plaster mortars and at least 24 months for the slaked lime used in the preparation of finishes, such as **rialto antiqua**. The slaked lime-based binder applied in a complete system for the composition of wet plaster mortars and in finishes forms a stratigraphy that blends together for homogeneity



Facade stratigraphy composed of: stone structure, render in **rialto malta grezza** blended with **cocciopesto** powder, layer of **malta grezza** blended with **cocciopesto**, **malta fine** blended with **cocciopesto**, **rialto antiqua 1** finish.

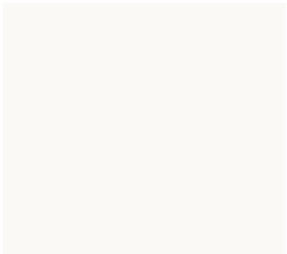
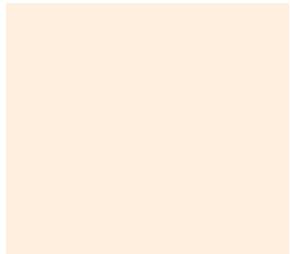
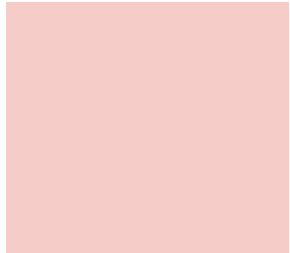
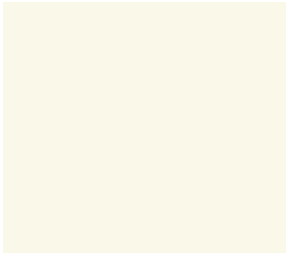

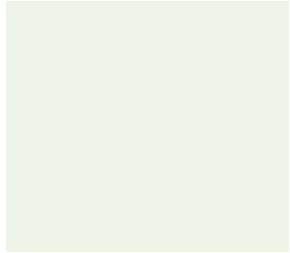
of the components and binders chemically and physically bond together. In this way, a single resistant element is obtained. The natural vapour permeability, water absorption and mechanical resistance remain coherent throughout the stratigraphy. **rialto cocciopesto cc** consists of ground and dehydrated earthenware, derived from the crushing of bricks. The addition of **rialto cocciopesto cc** in the mortars at the time of use produces a hydraulic resistance that improves the characteristics, increasing mechanical and chemical-physical resistances in shorter times.

**rialto malta grezza**, **rialto malta fine** and **rialto cocciopesto cc** are natural, bio-compatible, cement and additive-free products. The ideal fields of application for this system combined with **rialto antiqua** are: the restoration and conservation of antique buildings and the creation of new contemporary projects that follow the principles of Bio-Architecture.





THE HISTORICAL COLORS OF RIALTO ANTIQUA

			
<b>giglio</b>	<b>segesta</b>	<b>volterra</b>	<b>augusta</b>
			
<b>matera</b>	<b>orvieto</b>	<b>tarquinia</b>	<b>alassio</b>
			
<b>erice</b>	<b>urbino</b>	<b>taormina</b>	<b>fiuggi</b>
			
<b>fabriano</b>	<b>faenza</b>	<b>tropea</b>	<b>camogli</b>

SELECTION FROM THE “CENTO COLORI” COLOR COLLECTION

			
<b>001 achille</b>	<b>009 argo</b>	<b>021 calliope</b>	<b>081 oceano</b>
			
<b>005 agata</b>	<b>011 aristide</b>	<b>023 cefalonia</b>	<b>082 urania</b>
			
<b>006 andromeda</b>	<b>012 aristotele</b>	<b>026 cnosso</b>	<b>089 orione</b>
			
<b>007 apollo</b>	<b>013 asia</b>	<b>030 demetra</b>	<b>095 zante</b>



## THE COLOR RANGE

Different color tools have been created from the historical archives of the **rialto** color lab to provide a solution for every need: the renowned “**COLLEZIONE ITALIA**” fan deck and the “**CENTO COLORI**” color chart offer a premium selection of today’s most esteemed colors for lime-based products.

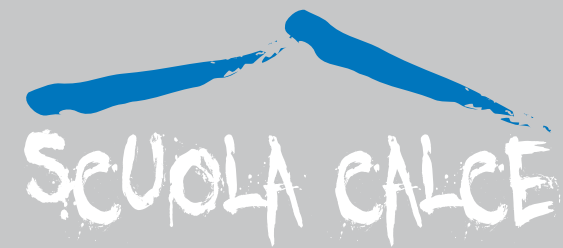


## TECHNICAL SUPPORT AND TRAINING

**rialto** customer service and technical support promote the correct use throughout Italy of long-seasoned slaked lime-based finishes, offering specific training courses for professionals.

“**rialto scuola calce**” training extends internationally and aims to spread and revitalise this excellence of the Italian construction tradition.

For information:  
[rialto@rialto-colors.com](mailto:rialto@rialto-colors.com)  
[www.rialto-colors.com](http://www.rialto-colors.com)



Note: the decorative solutions illustrated in this catalogue are to be considered a reference guide to inspire new decorative effects. The final effect of the product on the wall is decided by the personal style and interpretation of the installer. The versatile nature of the product makes every single project customisable and unique.

Care has been taken to ensure that the colors in this catalogue represent the true color of the product. However, this printed catalogue only approximates the color of real finishes. Printed colors may change over time due to exposure of light, paper aging, pigment fading and handling.

Total or partial reproduction of the content of this catalogue without written authorisation from rialto is prohibited.













**rialto**

via caduti sul lavoro, 7 - z.i. noghere

34015 muggia - trieste - italy

tel. +39 040 9897300

rialto@rialto-colors.com - [www.rialto-colors.com](http://www.rialto-colors.com)

rialto is a brand of:

COVEMA Vernici S.p.A.