



ERALIT

Troweled fine coating for exteriors

RIALTO ERALIT provides an antique-like troweled effect, similar to that of old colored plasters. It is mainly composed of copolymer resins for **standard type** and modified siloxane resins for **siloxane type**, selected marble and quartz grit, UV ray-resistant pigments, a special in-can preservative, and other additives.

PROPERTIES

RIALTO ERALIT is marked by and stands out for the following characteristics:

- it is water repellent
- water vapor permeability:
 - standard type:** 25 g/m² - 24 h, (ASTM-E96 Regulations), $\mu=830$, Sd=1 m
 - siloxane type:** 180 g/m² - 24h (ASTM-E96 Regulations), $\mu=100$, Sd=0.12 m
- it has good adhesion to the substrate: > 10Kgf/cm²
- it is stable in time
- it has excellent hiding power
- it is ready to use
- it is easy to apply using a stainless steel trowel
- it is not toxic
- it is non-flammable
- specific gravity: 1.65 ± 0.2 Kg/l
- pH:
 - standard type:** 7.5 ± 0.2
 - siloxane type:** 7.8 ± 0.2
- viscosity:
 - standard type:** 18,500 ± 500 mPas
 - siloxane type:** 18,000 ± 500 mPas
- dry residue:
 - standard type:** 77.7 ± 2% by weight
 - siloxane type:** 80 ± 2% by weight
- resin dry residue out of total dry residue:
 - standard type:** 9 ± 0.2% by weight
 - siloxane type:** 9.6 ± 0.2% by weight
- **Max grain size of the inerts: 1,2 mm**

PURPOSES

RIALTO ERALIT is ideal for obtaining a “plaster-like” finishing effect, for creating a long-lasting clean appearance and ensuring proper water-repellency to the treated surfaces.

Provided surfaces are sound, level and dry, **RIALTO ERALIT** can be applied to the following:

- fine plasters
- concrete
- prefabricated elements
- old paints
- insulating panels

COLOR RANGE

RIALTO ERALIT is available in a wide range of colors.

See relevant color chart and/or Collezione Italia fan deck.

Custom colors are available at extra cost, depending on the shade. A sample of the color must be provided. Minimum quantity: 100 kg.

Product of the same batch number should be used for a job.

PACKAGING

RIALTO ERALIT is available in 25 kg containers.

COVERING CAPACITY

The average covering capacity is 1.5 kg/m² (2.75 lb/sq.yd) but it may vary depending on the substrate nature and absorption rate.

REFERENCES

For further information regarding the product mentioned in the text, see the following technical sheets:

RIALTO FINISH

RIALTO STABILIZER

RIALTO DOMOSIL

RIALTO DURASIL



WORKING INSTRUCTIONS

- prepare scaffolding so as to allow continuous application until architectural impediments are encountered (string-courses, corners, joints, etc.)

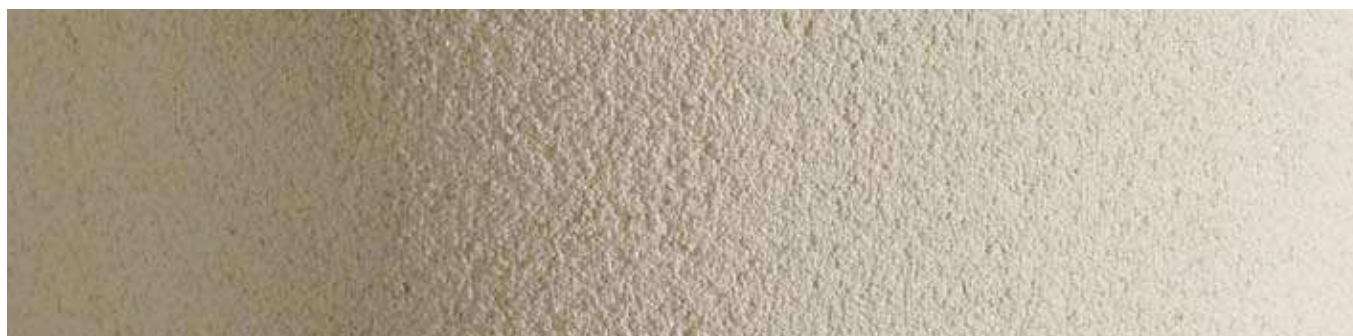
STANDARD TYPE:

- if the surface to be coated is too large, it is advisable to divide it into panels and finish the joints with **RIALTO FINISH**
- the surface to be treated must be perfectly dry and smooth in order to apply an even coat of **RIALTO ERALIT**
- if there is dust or deteriorated paint on the surface, apply a coat of **RIALTO STABILIZER** and allow at least 48 hours before starting the application of **RIALTO FINISH**
- apply an undercoat of **RIALTO FINISH**, diluted to 30% with water (same color of eralit finishing)

SILOXANE TYPE:

- if the surface to be coated is too large, it is advisable to divide it into panels and finish the joints with **RIALTO DOMOSIL**
- the surface to be treated must be perfectly dry and level in order to apply an even coat of **RIALTO ERALIT SILOSSANICO**
- it is advisable to apply an undercoat of **RIALTO DOMOSIL**, diluted to 30% with water, especially when the color of the surface is not even or contrasts with the color of the coating to be applied

- if there is dust or deteriorated paint on the surface, apply a coat of **RIALTO DURASIL** and allow at least 48 hours before starting the application of **RIALTO DOMOSIL**
- stir the product before use in order to make it homogeneous
- **RIALTO ERALIT** can be easily applied using a stainless steel trowel, spreading the product with even thickness and levelling off the surface exerting an even pressure
- wash trowel from time to time taking care not to wet surface
- when product is left to dry, protect walls from rain and frost
- this product requires approximately 8 hours to dry for standard type and 24 hours for siloxane type. Drying times, however, may vary as a result of the weather and humidity
- clean tools with water immediately after use
- do not apply in rainy weather, when temperatures are below 7°C (44°F) and never on surfaces either frozen or overheated by the sun
- protect containers from frost and temperatures above 30°C (86°F)
- dispose of product with care
- dispose of waste through authorized waste disposal services.



Specification for application of **RIALTO ERALIT SILOSSANICO** on new exterior plaster surface:

Preparation

Apply one coat of **RIALTO DOMOSIL** primer, in the same color as the finishing product. Dilute **RIALTO DOMOSIL** to 30% with water and apply either using a brush or a roller or a spray gun. Average covering capacity on fine plaster: 0.10 l/m². After the application of **RIALTO DOMOSIL**, allow at least 6 hours before applying the finishing product.

Finishing

On a dry plaster surface, apply one single coat of **RIALTO ERALIT SILOSSANICO**, a siloxane coating with weather-resistant embodied shade, based on oligomeric siloxane alkylates, selected inert minerals, and a permanent-elasticity copolymer thermoplastic binder, using a stainless steel trowel. Surface adherence: > 10 kgf/cm².

Water vapor permeability: 180 g/m² - 24 hours.

Average covering capacity: 1.5 kg/m².

Price for material and application, excluding any scaffolds, € per m².

For further help or information regarding the products in **RIALTO** range, contact your local dealer.

Every care has been taken to ensure that the information provided in this technical data sheet is accurate. **RIALTO** is unable to guarantee results, as it has no control over the conditions under which the products are applied.